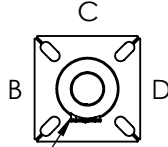




DRILLED PER FIXTURE REQUIREMENTS:
 DM1-DRILLED FOR 1 FIXTURE
 DM290 -DM2180-DRILLED FOR 2 FIXTURES AT 90° OR 180°
 DM390-DM3120-DRILLED FOR 3 FIXTURES AT 90° OR 120°
 D490-DRILLED FOR 4 FIXTURES

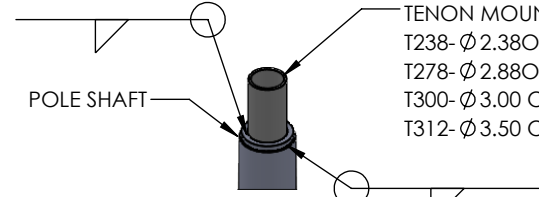
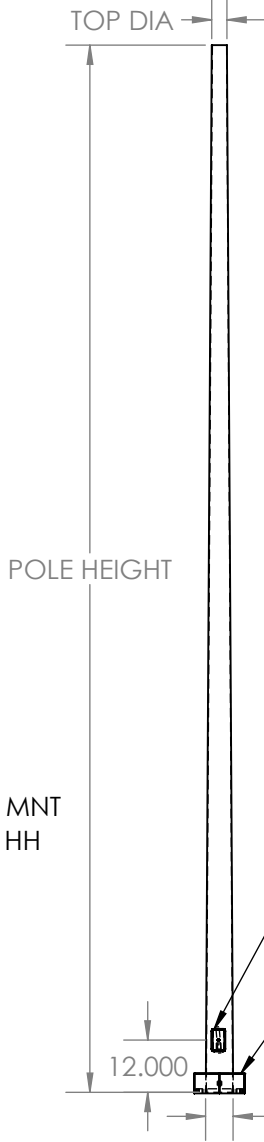


3X8 HAND HOLE
 STD SIDE A

DRILLED MOUNT OPTIONS

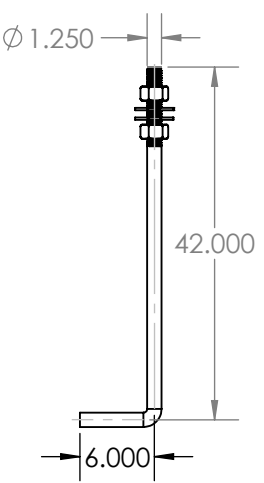
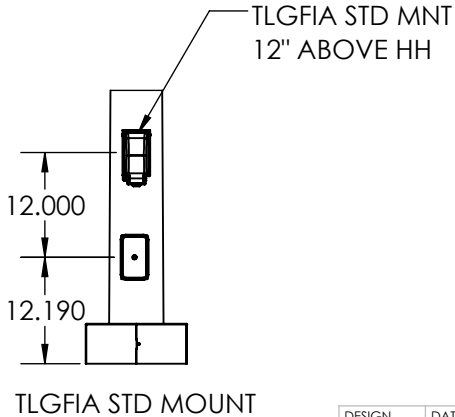
Drilling Locations				
Sides	A	B	C	D
Hand Hole	X			
DM1	X			
DM290	X	X		
DM2180		X		X
DM390	X	X		X
DM490	X	X	X	X

POLE HEIGHT



TENON MOUNT OPTIONS:
 T238- Ø 2.38OD X 4.00 LG
 T278- Ø 2.88OD X 4.00 LG
 T300- Ø 3.00 OD X 6.00 LG
 T312- Ø 3.50 OD X 6.00 LG

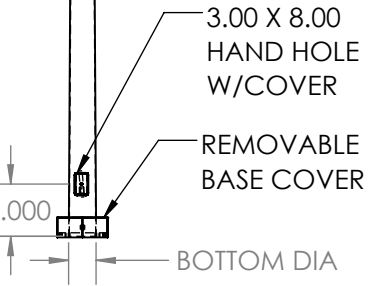
TENON MOUNT OPTIONS



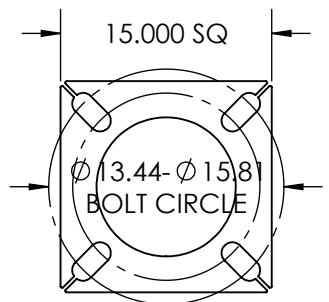
Ø 1.25 x 42.00 ANCHOR BOLT
 AB KIT REQ'D KAB12542G15R

POLE SPECIFICATIONS RTP45-7 (2 PC)				
NO.	COMPONENT	ASTM SPEC	MIN. YIELD (PSI)	
1	POLE SHAFT	A572-55	55,000	
2	BASE PLATE	A36	36,000	
3	ANCHOR BOLTS	F1554 GR 55	55,000	
4	ANCHOR BOLT HDW	A153	---	
FINISH SPECIFICATIONS				
IF GALV FINISH OPTION IS SPECIFIED POLE WILL BE HOT DIP GALVANIZED PER ASTM A123 SPECIFICATIONS. IF GALVP FINISH OPTION IS SPECIFIED POLE WILL BE HOT DIP GALVANIZED PER ASTM A123, THEN POWDER COATED WITH TEXTURED POLYESTER POWDER COAT ELECTROSTATICALLY APPLIED.				
IF POLYESTER POWDER COAT PAINT FINISH IS SPECIFIED POLE WILL BE SHOT BLASTED, WASHED, PRETREATED & DRIED THEN POWDER COAT WILL BE ELECTROSTATICALLY APPLIED PER AAMA 2604/2605 SPECIFICATIONS.				
POLE DIMENSIONS				
	POLE HGT. (FT)	TOP DIA (IN)	BOTTOM DIA (IN)	STL GA
	45.0'	4.20"	10.20"	7 (.188) 11 (.119)
BASE PLATE DIMENSIONS				
	BOLT CIRCLE DIA. (IN)	BASE PLATE (IN)	A/B HOLE WD (IN)	BASE PLATE THK (IN)
	RD5 13.44-15.81"	15.00 SQ	1.50"	1.25"
ANCHOR BOLT DIMENSIONS				
	ANCHOR BOLT DIA (IN)	ANCHOR BOLT LENGTH (IN)		
	1.25"	42.00"		
ALLOWABLE WIND LOAD (SQ. FT)				
	WIND INDICATED EPA	100 MPH	110MPH	120MPH 130MPH 140MPH
	EPA	---	17.2	12.4 8.8 5.9 3.7

POLE DETAIL



3.00 X 8.00 HAND HOLE COVER 15.00 X 15.00 X 1.25 THK BASE PLATE



DESIGN	DATE	5.29.26
DRAWN	DATE	5.29.26
CHECKED	DATE	
APPROVED	DATE	

SOLIDWORKS DRAWING
 UNLESS OTHERWISE SPECIFIED DIMENSIONS ARE IN INCHES
 DECIMALS ANGLE
 X.X = ±0.030 X.X = ±1.0°
 X.XX = ±0.010 X.XX = ±0.5°
 X.XXX = ±0.005
 X.XXXX = ±0.0005 SURFACE FINISH 125/✓
 FRACTION = ±1/32

TECHLIGHT®
 WWW.TECHLIGHT.COM

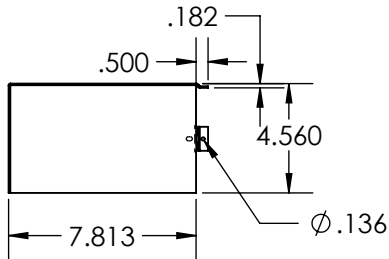
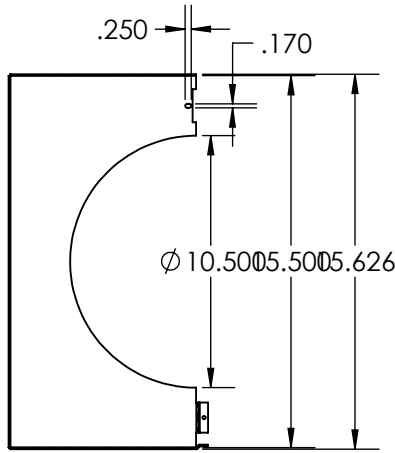
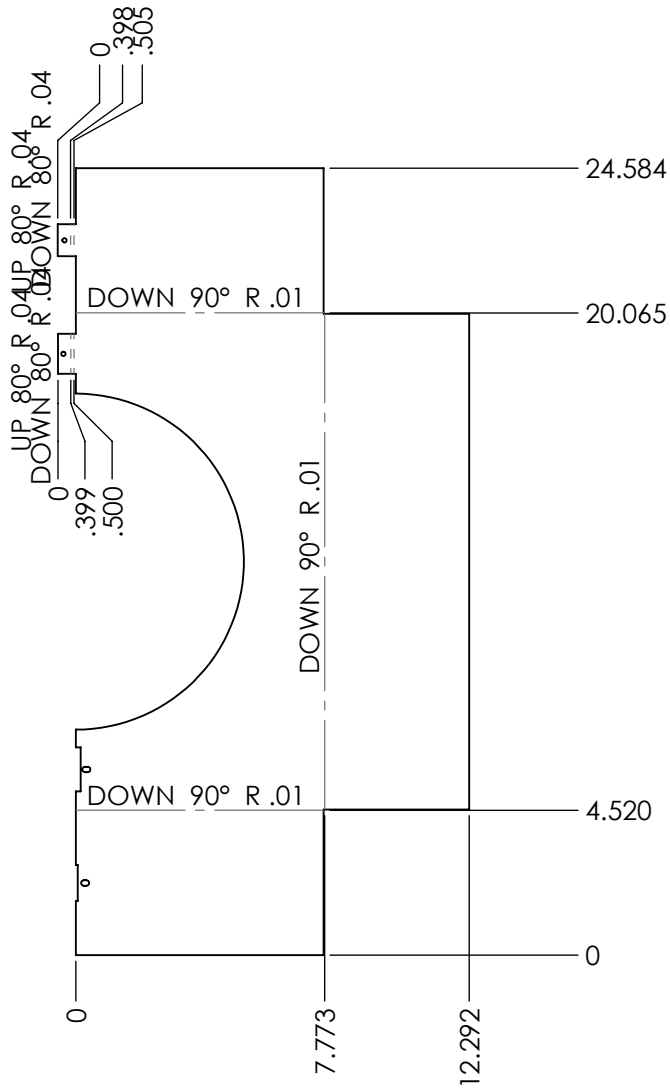
THE INFORMATION CONTAINED IN THIS DRAWING IS THE SOLE PROPERTY OF TECHLIGHTUSA. ANY REPRODUCTION IN PART OR WHOLE WITHOUT THE WRITTEN PERMISSION OF TECHLIGHTUSA IS PROHIBITED.

PAINT TO ORDER

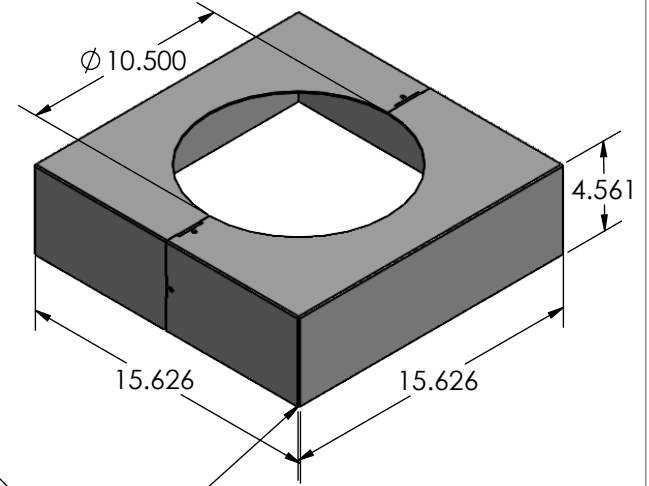
MATERIAL #:	STEEL
MATERIAL:	
MATERIAL SIZE:	

DESCRIPTION	RTP 45-7			
MASS PROPERTIES	DENSITY	SURFACE AREA	VOLUME	WEIGHT
	lbs/cu.in.	sq.in.	cu.in.	lbs
AMOUNT OF PAINT	SIZE	PART NO.		REV.
lbs	A	RTP 45-7		-
DO NOT SCALE DRAWING	SCALE	CAD FILE		SHEET
	1:96	RTP20 Assy		1 OF 2

REVISIONS				
ZONE	REV.	DESCRIPTION	DATE	APPROVED
	A	REVD SCREW DESCRIPTION	5/29/2026	PRM



TACK
ALL 4
CORNERS



ITEM NO.	PART NUMBER	DESCRIPTION	QTY.
1	PBC RTP50-15-2	BASE PLATE COVER	2
2	P838HWHSMS	SCREW 8-15 X 3/8 HWH SS 18-8	4

PROPRIETARY AND CONFIDENTIAL
THE INFORMATION CONTAINED IN THIS DRAWING IS THE SOLE PROPERTY OF WWW.TECHLIGHTUSA.COM ANY REPRODUCTION IN PART OR AS A WHOLE WITHOUT THE WRITTEN PERMISSION OF WWW.TECHLIGHTUSA.COM IS PROHIBITED.

DIMENSIONS ARE IN INCHES TOLERANCES: FRACTIONAL ± ANGULAR: MACH ± BEND ± TWO PLACE DECIMAL ± THREE PLACE DECIMAL ±		NAME	DATE	TECHLIGHT.COM	
CREATED	6.27.25				
CHECKED				PBC RTP50-15-2 BASE PLATE COVER	
ENG APPR.					
MFG APPR.					
Q.A.					
CONFIGURATION					
NEXT ASSY	USED ON	FINISH PAINT TO ORDER		SIZE A	DWG. NO. PBC RTP50-15-2
APPLICATION	DO NOT SCALE DRAWING			SCALE:1:4	WEIGHT:
				SHEET 2 OF 2	