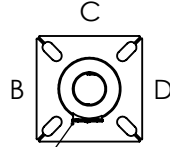




DRILLED PER FIXTURE REQUIREMENTS:  
 DM1-DRILLED FOR 1 FIXTURE  
 DM290 -DM2180-DRILLED FOR 2 FIXTURES AT 90° OR 180°  
 DM390-DM3120-DRILLED FOR 3 FIXTURES AT 90° OR 120°  
 D490-DRILLED FOR 4 FIXTURES



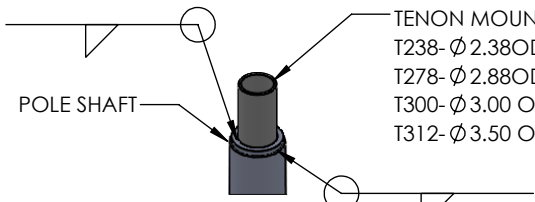
3X5 HAND HOLE  
 STD SIDE A

DRILLED MOUNT OPTIONS

Drilling Locations				
Sides	A	B	C	D
Hand Hole	X			
DM1	X			
DM290	X	X		
DM2180		X		X
DM390	X	X	X	X
DM490	X	X	X	X

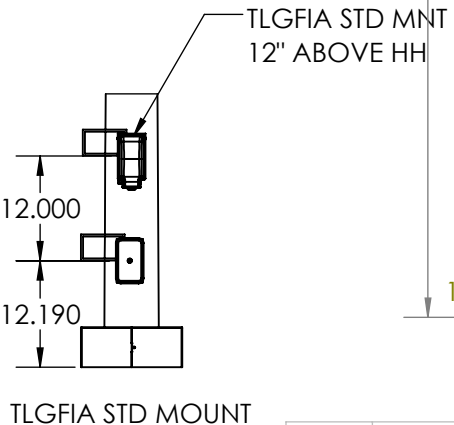
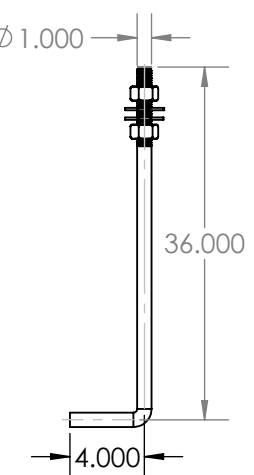


POLE SPECIFICATIONS RTP39-11						
NO.	COMPONENT	ASTM SPEC	MIN. YIELD (PSI)			
1	POLE SHAFT	A1011-55	55,000			
2	BASE PLATE	A36	36,000			
3	ANCHOR BOLTS	F1554 GR 55	55,000			
4	ANCHOR BOLT HDW	A153	---			
FINISH SPECIFICATIONS						
IF GALV FINISH OPTION IS SPECIFIED POLE WILL BE HOT DIP GALVANIZED PER ASTM A123 SPECIFICATIONS. IF GALVP FINISH OPTION IS SPECIFIED POLE WILL BE HOT DIP GALVANIZED PER ASTM A123, THEN POWDER COATED WITH TEXTURED POLYESTER POWDER COAT ELECTROSTATICALLY APPLIED.						
IF POLYESTER POWDER COAT PAINT FINISH IS SPECIFIED POLE WILL BE SHOT BLASTED, WASHED, PRETREATED & DRIED THEN POWDER COAT WILL BE ELECTROSTATICALLY APPLIED PER AAMA 2604/2605 SPECIFICATIONS.						
POLE DIMENSIONS						
POLE HGT. (FT)		TOP DIA (IN)	BOTTOM DIA (IN)	STL GA		
39.0'		3.50"	9.00"	11 (.119)		
BASE PLATE DIMENSIONS						
BOLT CIRCLE DIA. (IN)		BASE PLATE (IN)	A/B HOLE WD (IN)	BASE PLATE THK (IN)		
RD7 11.25-13.75"		13.00 SQ	1.25"	1.25"		
ANCHOR BOLT DIMENSIONS						
ANCHOR BOLT DIA (IN)		ANCHOR BOLT LENGTH (IN)				
1.00"		36.00"				
ALLOWABLE WIND LOAD (SQ. FT)						
WIND	INDICATED EPA	100 MPH	110MPH	120MPH	130MPH	140MPH
EPA	---	12.9	9.3	6.5	4.4	2.7



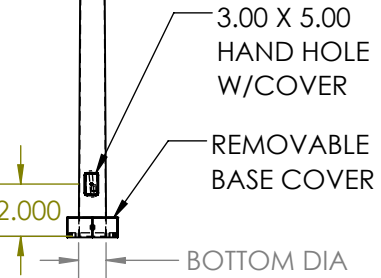
TENON MOUNT OPTIONS:  
 T238-Ø2.38ODX 4.00 LG  
 T278-Ø2.88OD X 4.00 LG  
 T300-Ø3.00 OD X 6.00 LG  
 T312-Ø3.50 OD X 6.00 LG

TENON MOUNT OPTIONS



TLGFA STD MOUNT

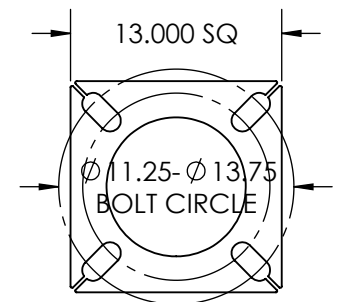
Ø 1.00 x 36.00 ANCHOR BOLT  
 AB KIT REQ'D KAB136G125R



POLE DETAIL



3.00 X 5.00 HAND HOLE COVER 13.00 X 13.00 X 1.25 THK BASE PLATE



DESIGN	DATE
PRM	5.29.26
DRAWN	DATE
PRM	5.29.26
CHECKED	DATE
APPROVED	DATE

**SOLIDWORKS DRAWING**  
 UNLESS OTHERWISE SPECIFIED  
 DIMENSIONS ARE IN INCHES

DECIMALS	ANGLE
X.X = ±0.030	X.X = ±1.0°
X.XX = ±0.010	X.XX = ±0.5°
X.XXX = ±0.005	
X.XXXX = ±0.0005	
FRACTION=±1/32	

SURFACE 125/ FINISH

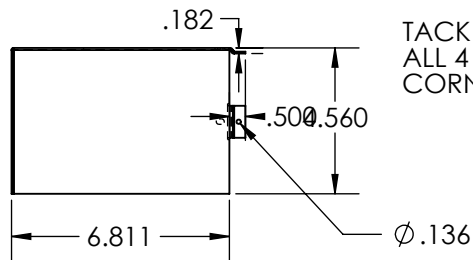
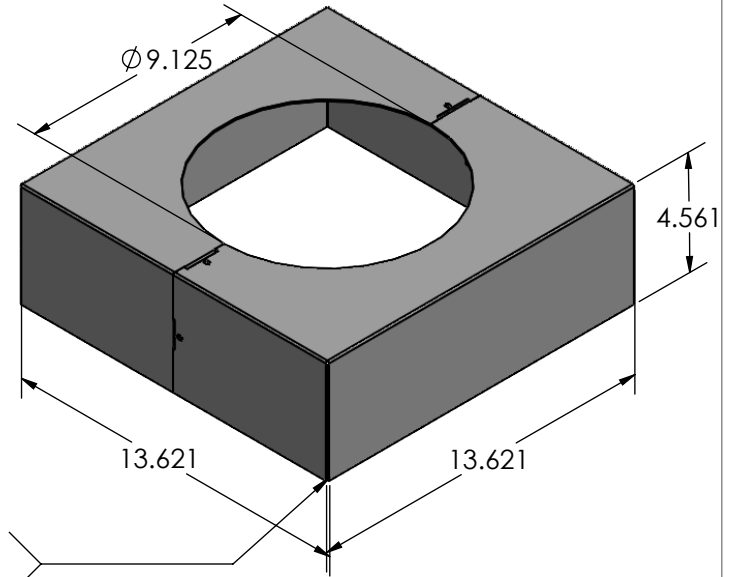
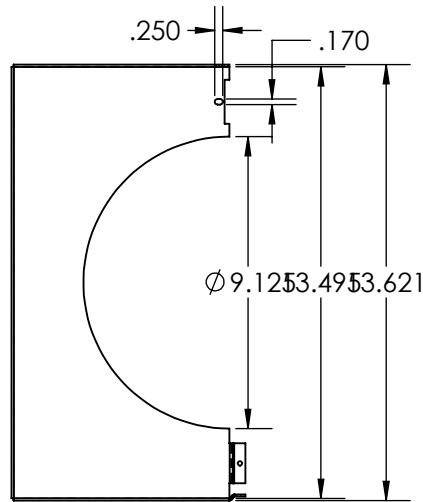
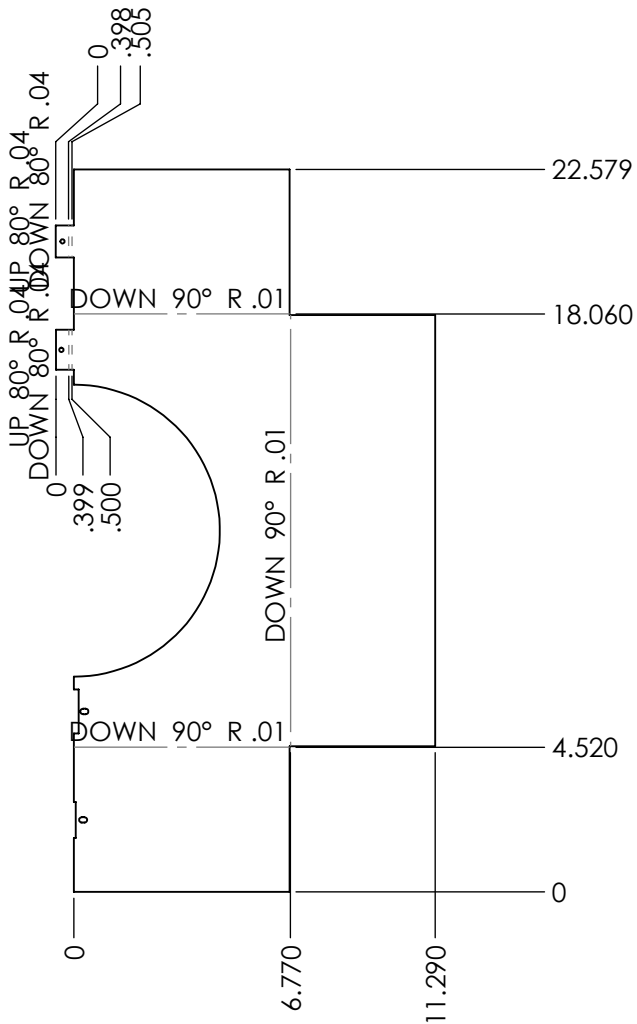
**TECHLIGHT®**  
 WWW.TECHLIGHT.COM

THE INFORMATION CONTAINED IN THIS DRAWING IS THE SOLE PROPERTY OF TECHLIGHTUSA. ANY REPRODUCTION IN PART OR WHOLE WITHOUT THE WRITTEN PERMISSION OF TECHLIGHTUSA IS PROHIBITED.

PAINT TO ORDER	
MATERIAL #:	STEEL
MATERIAL:	
MATERIAL SIZE:	

DESCRIPTION		RTP 39-11			
MASS PROPERTIES	DENSITY	SURFACE AREA	VOLUME	WEIGHT	
	lbs/cu.in.	sq.in.	cu.in.	lbs	
AMOUNT OF PAINT	SIZE	PART NO.	RTP 39-11		
	lbs	A	REV. -		
DO NOT SCALE DRAWING	SCALE	CAD FILE	SHEET 1 OF 2		
	1:96	RTP20 Assy			

REVISIONS				
ZONE	REV.	DESCRIPTION	DATE	APPROVED
	A	REVD WIDTH TO 13.625 HT TO 4.56, BEND DIMS	6/20/2025	PRM
	B	REVD SCREW DESCRIPTION	5/29/2026	PRM
	E	REVISED TITLE BLK DESCRIPTION	6/2/2026	PRM



TACK ALL 4 CORNERS

ITEM NO.	PART NUMBER	DESCRIPTION	QTY.
1	PBCRTP39-13-2	BASE PLATE COVER	2
2	P838HWHSMS	SCREW 8-15 X 3/8 HWH SS 18-8	4

**PROPRIETARY AND CONFIDENTIAL**  
 THE INFORMATION CONTAINED IN THIS DRAWING IS THE SOLE PROPERTY OF WWW.TECHLIGHTUSA.COM ANY REPRODUCTION IN PART OR AS A WHOLE WITHOUT THE WRITTEN PERMISSION OF WWW.TECHLIGHTUSA.COM IS PROHIBITED.

DIMENSIONS ARE IN INCHES		NAME	DATE	<p>TECHLIGHT.COM</p> <p>COVER BASE PLATE 13SQ PBCRTP39-13 ALUM</p>
TOLERANCES:		CREATED	12/19/22	
FRACTIONAL ±		CHECKED		
ANGULAR: MACH ± BEND ±		ENG APPR.		
TWO PLACE DECIMAL ±		MFG APPR.		
THREE PLACE DECIMAL ±		Q.A.		
MATERIAL		CONFIGURATION		
RMA063				
FINISH				
PAINT TO ORDER				
NEXT ASSY	USED ON			
APPLICATION	DO NOT SCALE DRAWING			
SIZE	DWG. NO.	REV.		
A	PBCRTP39-13	C		
SCALE:1:4	WEIGHT:	SHEET 2 OF 2		