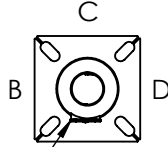




DRILLED PER FIXTURE REQUIREMENTS:
 DM1-DRILLED FOR 1 FIXTURE
 DM290 -DM2180-DRILLED FOR 2 FIXTURES AT 90° OR 180°
 DM390-DM3120-DRILLED FOR 3 FIXTURES AT 90° OR 120°
 D490-DRILLED FOR 4 FIXTURES

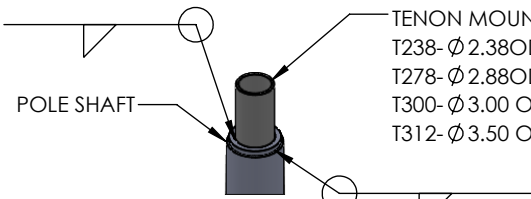


A
 3X5 HAND HOLE
 STD SIDE A

DRILLED MOUNT OPTIONS

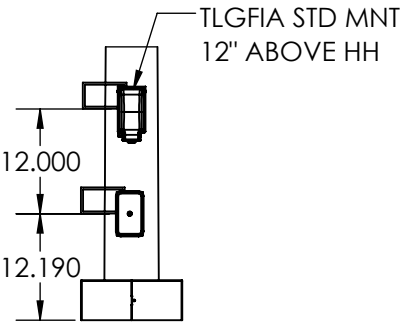
Drilling Locations

Sides	A	B	C	D
Hand Hole	X			
DM1	X			
DM290	X	X		
DM2180		X		X
DM390	X	X		X
DM490	X	X	X	X



TENON MOUNT OPTIONS

TENON MOUNT OPTIONS:
 T238- Ø2.38ODX 4.00 LG
 T278- Ø2.88OD X 4.00 LG
 T300- Ø3.00 OD X 6.00 LG
 T312- Ø3.50 OD X 6.00 LG



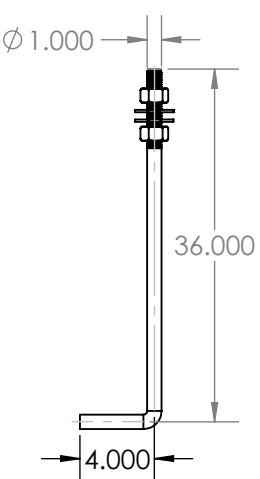
TLGFA STD MOUNT

POLE HEIGHT



POLE DETAIL

POLE SPECIFICATIONS RTP35-11					
NO.	COMPONENT	ASTM SPEC	MIN. YIELD (PSI)		
1	POLE SHAFT	A1011-55	55,000		
2	BASE PLATE	A36	36,000		
3	ANCHOR BOLTS	F1554 GR 55	55,000		
4	ANCHOR BOLT HDW	A153	---		
FINISH SPECIFICATIONS					
IF GALV FINISH OPTION IS SPECIFIED POLE WILL BE HOT DIP GALVANIZED PER ASTM A123 SPECIFICATIONS. IF GALVP FINISH OPTION IS SPECIFIED POLE WILL BE HOT DIP GALVANIZED PER ASTM A123, THEN POWDER COATED WITH TEXTURED POLYESTER POWDER COAT ELECTROSTATICALLY APPLIED. IF POLYESTER POWDER COAT PAINT FINISH IS SPECIFIED POLE WILL BE SHOT BLASTED, WASHED, PRETREATED & DRIED THEN POWDER COAT WILL BE ELECTROSTATICALLY APPLIED PER AAMA 2604/2605 SPECIFICATIONS.					
POLE DIMENSIONS					
POLE HGT. (FT)		TOP DIA (IN)	BOTTOM DIA (IN)	STL GA	
35.0'		3.60"	8.50"	11 (.119)	
BASE PLATE DIMENSIONS					
BOLT CIRCLE DIA. (IN)		BASE PLATE (IN)	A/B HOLE WD (IN)	BASE PLATE THK (IN)	
RD4 11.667-14.084"		13.00 SQ	1.125"	1.00"	
ANCHOR BOLT DIMENSIONS					
ANCHOR BOLT DIA (IN)		ANCHOR BOLT LENGTH (IN)			
1.00"		36.00"			
ALLOWABLE WIND LOAD (SQ. FT)					
WIND	INDICATED EPA	100 MPH	110MPH	120MPH	130MPH 140MPH
EPA	---	13.8	10.2	7.5	5.3 3.7



Ø 1.00 x 36.00 ANCHOR BOLT
 AB KIT REQ'D KAB136G125R

DESIGN	DATE	5.29.26
DRAWN	DATE	5.29.26
CHECKED	DATE	
APPROVED	DATE	

SOLIDWORKS DRAWING
 UNLESS OTHERWISE SPECIFIED DIMENSIONS ARE IN INCHES
 DECIMALS ANGLE
 X.X = ±0.030 X.X = ±1.0°
 X.XX = ±0.010 X.XX = ±0.5°
 X.XXX = ±0.005 SURFACE 125/
 X.XXXX = ±0.0005 FINISH
 FRACTION=±1/32

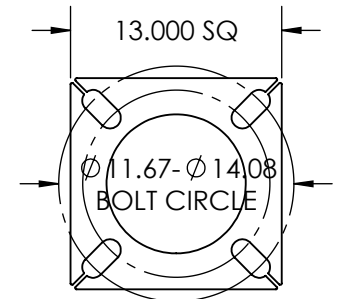
TECHLIGHT®
 WWW.TECHLIGHT.COM

THE INFORMATION CONTAINED IN THIS DRAWING IS THE SOLE PROPERTY OF TECHLIGHTUSA. ANY REPRODUCTION IN PART OR WHOLE WITHOUT THE WRITTEN PERMISSION OF TECHLIGHTUSA IS PROHIBITED.

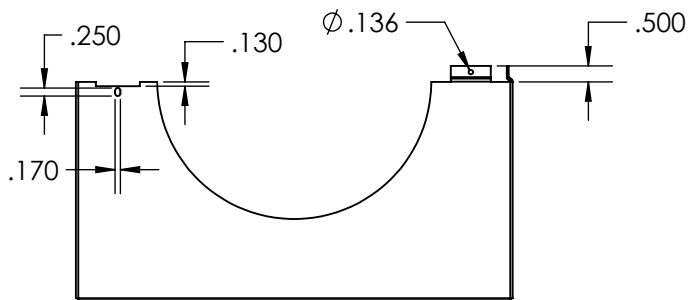
PAINT TO ORDER

MATERIAL #: STEEL
 MATERIAL:
 MATERIAL SIZE:

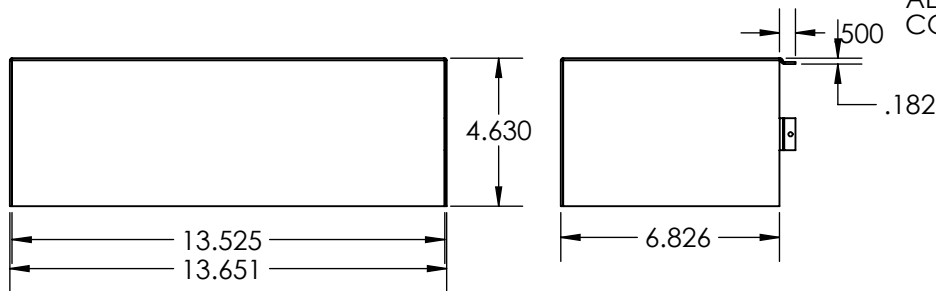
DESCRIPTION		RTP 35-11			
MASS PROPERTIES	DENSITY	SURFACE AREA	VOLUME	WEIGHT	
	lbs/cu.in.	sq.in.	cu.in.	lbs	
AMOUNT OF PAINT	SIZE	PART NO.	RTP 35-11		
DO NOT SCALE DRAWING	SCALE	CAD FILE	SHEET 1 OF 2		



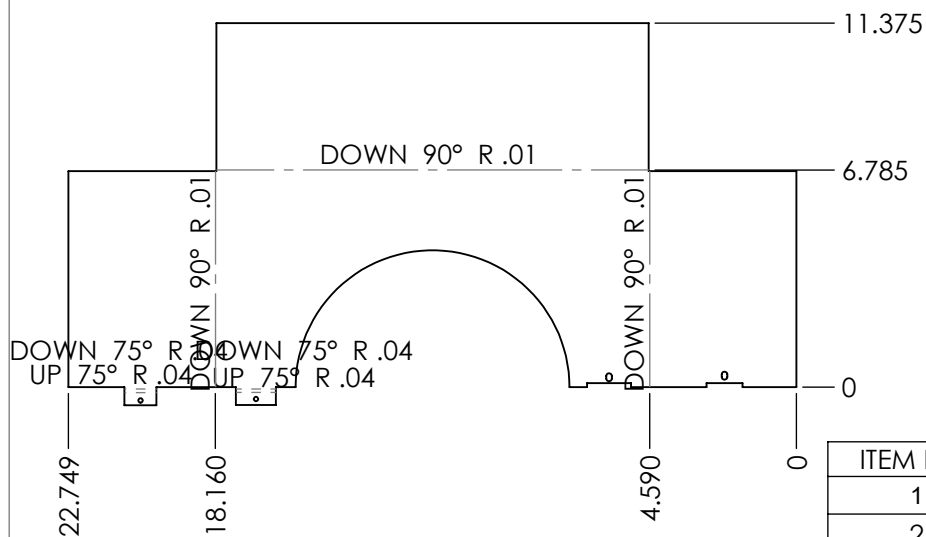
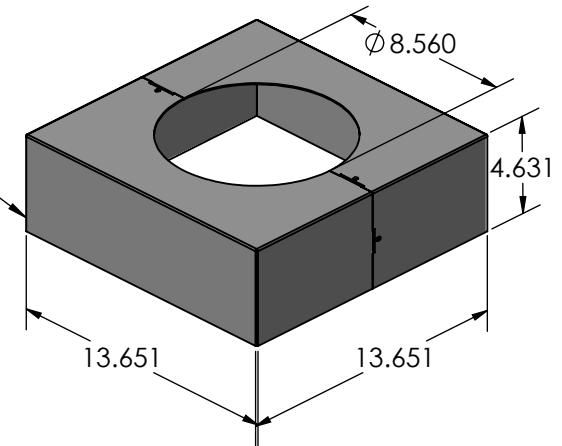
3.00 X 5.00 HAND HOLE W/COVER
 REMOVABLE BASE COVER
 3.00 X 5.00 HAND HOLE COVER 13.00 X 13.00 X 1.00 THK BASE PLATE



REVISIONS				
ZONE	REV.	DESCRIPTION	DATE	APPROVED
	A	REVD BENDS & SCREW	5/29/2026	PRM
	B	REVD TITLE BLOCK DESCRIPTION	6/2/2026	PRM



TACK
ALL 4
CORNERS



ITEM NO.	PART NUMBER	DESCRIPTION	QTY.
1	PBCRTP35-13	BASE COVER	2
2	P838HWHSMS	SCREW 8-15 X 3/8 HWH SS 18-8	2

PROPRIETARY AND CONFIDENTIAL
THE INFORMATION CONTAINED IN THIS DRAWING IS THE SOLE PROPERTY OF WWW.TECHLIGHTUSA.COM ANY REPRODUCTION IN PART OR AS A WHOLE WITHOUT THE WRITTEN PERMISSION OF WWW.TECHLIGHTUSA.COM IS PROHIBITED.

DIMENSIONS ARE IN INCHES		NAME	DATE	TECHLIGHT.COM COVER BASE PLATE 13SQ RTP 35 ALUM
TOLERANCES:		CREATED	6.11.25	
FRACTIONAL ±		CHECKED		
ANGULAR: MACH ± BEND ±		ENG APPR.		
TWO PLACE DECIMAL ±		MFG APPR.		
THREE PLACE DECIMAL ±		Q.A.		
MATERIAL		CONFIGURATION		
RMA063				
FINISH				
PAINT TO ORDER				
NEXT ASSY	USED ON			
APPLICATION	DO NOT SCALE DRAWING			
SIZE A	DWG. NO. PBCRTP35-13	REV. B		
SCALE:1:8	WEIGHT:	SHEET 2 OF 2		