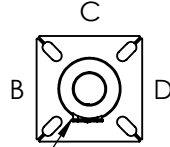




DRILLED PER FIXTURE REQUIREMENTS:
 DM1-DRILLED FOR 1 FIXTURE
 DM290 -DM2180-DRILLED FOR 2 FIXTURES AT 90° OR 180°
 DM390-DM3120-DRILLED FOR 3 FIXTURES AT 90° OR 120°
 D490-DRILLED FOR 4 FIXTURES



3X5 HAND HOLE
 STD SIDE A

DRILLED MOUNT OPTIONS

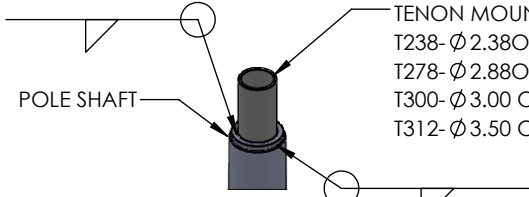
Drilling Locations				
Sides	A	B	C	D
Hand Hole	X			
DM1	X			
DM290	X	X		
DM2180		X		X
DM390	X	X	X	X
DM490	X	X	X	X

TOP DIA



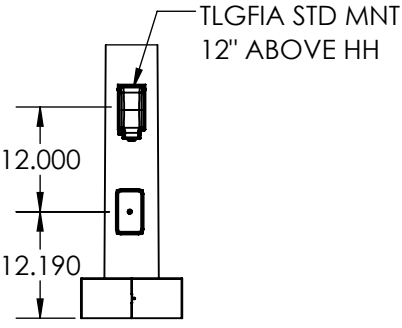
POLE HEIGHT

POLE SPECIFICATIONS RTP25-11						
NO.	COMPONENT	ASTM SPEC	MIN. YIELD (PSI)			
1	POLE SHAFT	A1011-55	55,000			
2	BASE PLATE	A36	36,000			
3	ANCHOR BOLTS	F1554 GR 55	55,000			
4	ANCHOR BOLT HDW	A153	---			
FINISH SPECIFICATIONS						
IF GALV FINISH OPTION IS SPECIFIED POLE WILL BE HOT DIP GALVANIZED PER ASTM A123 SPECIFICATIONS. IF GALVP FINISH OPTION IS SPECIFIED POLE WILL BE HOT DIP GALVANIZED PER ASTM A123, THEN POWDER COATED WITH TEXTURED POLYESTER POWDER COAT ELECTROSTATICALLY APPLIED. IF POLYESTER POWDER COAT PAINT FINISH IS SPECIFIED POLE WILL BE SHOT BLASTED, WASHED, PRETREATED & DRIED THEN POWDER COAT WILL BE ELECTROSTATICALLY APPLIED PER AAMA 2604/2605 SPECIFICATIONS.						
POLE DIMENSIONS						
POLE HGT. (FT)	TOP DIA (IN)	BOTTOM DIA (IN)	STL GA			
25.0'	3.50"	7.00"	11 (.119)			
BASE PLATE DIMENSIONS						
BOLT CIRCLE DIA. (IN)	BASE PLATE (IN)	A/B HOLE WD (IN)	BASE PLATE THK (IN)			
RD170 9.75-12.25"	11.00 SQ	1.125"	1.00"			
ANCHOR BOLT DIMENSIONS						
ANCHOR BOLT DIA (IN)	ANCHOR BOLT LENGTH (IN)					
1.00"	36.00"					
ALLOWABLE WIND LOAD (SQ. FT)						
WIND	INDICATED EPA	100 MPH	110MPH	120MPH	130MPH	140MPH
EPA	---	16.9	13.2	10.3	8.1	6.4



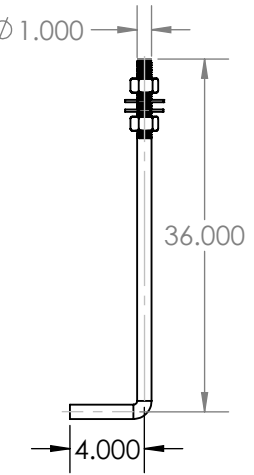
TENON MOUNT OPTIONS:
 T238-Ø 2.38ODX 4.00 LG
 T278-Ø 2.88OD X 4.00 LG
 T300-Ø 3.00 OD X 6.00 LG
 T312-Ø 3.50 OD X 6.00 LG

TENON MOUNT OPTIONS



TLGFA STD MNT
 12" ABOVE HH

TLGFA STD MOUNT

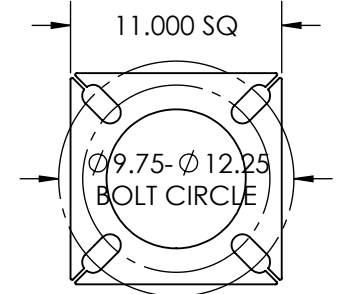


Ø 1.00 x 36.00 ANCHOR BOLT
 AB KIT REQ'D KAB136G11R

POLE DETAIL

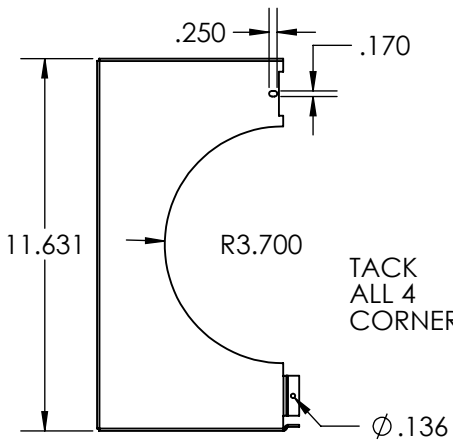
3.00 X 5.00
 HAND HOLE
 W/COVER

REMOVABLE
 BASE COVER



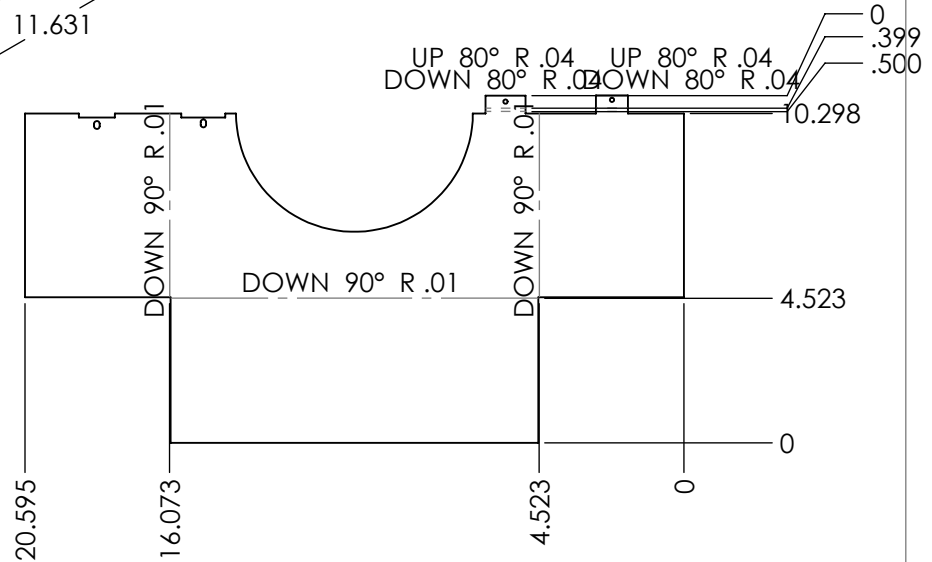
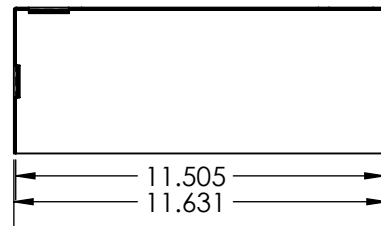
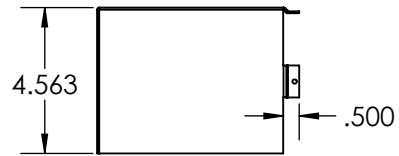
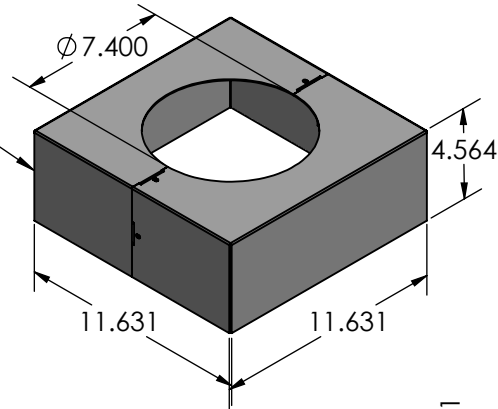
3.00 X 5.00 HAND HOLE COVER 11.00 X 11.00 X 1.00 THK BASE PLATE

DESIGN PRM	DATE 5.26.26	SOLIDWORKS DRAWING UNLESS OTHERWISE SPECIFIED DIMENSIONS ARE IN INCHES DECIMALS ANGLE X.X = ±0.030 X.X = ±1.0° X.XX = ±0.010 X.XX = ±0.5° X.XXX = ±0.005 X.XXX = ±0.005° X.XXXX = ±0.0005 X.XXXX = ±0.0005° FRACTION=±1/32 FINISH	TECHLIGHT® WWW.TECHLIGHT.COM		THE INFORMATION CONTAINED IN THIS DRAWING IS THE SOLE PROPERTY OF TECHLIGHTUSA. ANY REPRODUCTION IN PART OR WHOLE WITHOUT THE WRITTEN PERMISSION OF TECHLIGHTUSA IS PROHIBITED.
DRAWN PRM	DATE 5.26.26		DESCRIPTION		
CHECKED	DATE		RTP 25-11		
APPROVED	DATE		MASS PROPERTIES DENSITY SURFACE AREA VOLUME WEIGHT lbs/cu.in. sq.in. cu.in. lbs		
MATERIAL #: STEEL MATERIAL: MATERIAL SIZE:		PAINT TO ORDER FINISH	AMOUNT OF PAINT SIZE PART NO. REV. lbs A RTP 25-11 - DO NOT SCALE DRAWING SCALE 1:96 CAD FILE RTP20 Assy SHEET 1 OF 2		



TACK
ALL 4
CORNERS

REVISIONS				
ZONE	REV.	DESCRIPTION	DATE	APPROVED
	A	REVD BEND DIMS	7/2/2025	PRM
	B	REVD BOM SCREW DESCRIPTION	5/26/2026	PRM
	C	REVD TITLE BLOCK DESCRIPTION	6/1/2026	PRM



ITEM NO.	PART NUMBER	DESCRIPTION	QTY.
1	PBCRTP25 11	BASE COVER	2
2	P838HWHSMS	SCR 8-15X3/8 HWH SS 18-8	4

PROPRIETARY AND CONFIDENTIAL
THE INFORMATION CONTAINED IN THIS DRAWING IS THE SOLE PROPERTY OF WWW.TECHLIGHTUSA.COM ANY REPRODUCTION IN PART OR AS A WHOLE WITHOUT THE WRITTEN PERMISSION OF WWW.TECHLIGHTUSA.COM IS PROHIBITED.

DIMENSIONS ARE IN INCHES TOLERANCES: FRACTIONAL ± ANGULAR: MACH ± BEND ± TWO PLACE DECIMAL ± THREE PLACE DECIMAL ±		NAME	DATE	TECHLIGHT.COM	
CREATED			7.2.25	CVR BASE PLATE RTP 24/25- 7-11GA ALUM	
CHECKED					
ENG APPR.					
MFG APPR.					
Q.A.					
MATERIAL RMA063		CONFIGURATION		SIZE A	DWG. NO. PBCRTP25 11
NEXT ASSY	USED ON	FINISH PAINT TO ORDER		REV. C	
APPLICATION		DO NOT SCALE DRAWING		SCALE:1:8	WEIGHT:
				SHEET 2 OF 2	