

Catalog Number

Project

Type

FEATURES & SPECIFICATIONS

APPLICATION — The LWWD Series Linear LED Wall Wash is designed for illuminating architectural surfaces and commercial signage. Areas with limited accessibility due to fixture location or where heavy pedestrian or vehicle traffic makes maintenance difficult are ideal applications. The low-profile design keeps the fixture placement discrete for both ground and wall mounted applications.

FEATURES — The heavy-duty housing is constructed of extruded aluminum with die cast aluminum connectors. A linear diffuser provides even light coverage and precise beam angles. The LED strips and optics are protected by a low iron tempered glass (3mm) lens. Complete unit is provided with IP67 integrated driver.

FINISH — A Super Durable Polyester powder coat finish is electrostatically applied in our state-of-the-art paint facility. Standard colors available: Black, Bronze, US Green, White. Custom colors available upon request.

MOUNTING — The fixture is designed to be mounted using 1/2-14 NPS threaded aluminum stems or arms (sold separately). These stems or arms, which can be configured for uplight or downlight applications, are powder-coated to match the fixture's finish.

ELECTRICAL SYSTEM — Long life LED's and high efficiency drivers work together to provide superior performance in a safe and efficient package. L95 at 10K hours L70 ≥ 50K hours. LED's available in 3000K, 4000K and 5000K with a CRI >80. Electronic drivers are integrated into the fixture. 120-277V drivers. 10kV surge protection provided. Power factor >0.9, 0-10V dimming available, order DLP.

LWWD SERIES

Linear LED Wall Wash - Integrated Driver



SERIES	LENGTH HEIGHT & WIDTH
LWWD	3.2" x 2.5" x 47.5" (4' Linear Section)

LISTINGS — ETL listed for wet locations. Classified according to the new 1598C safety standard. Complies with UL8750. Meets US and Canadian safety standards. RoHS compliant.

WARRANTY — The complete luminaire is covered by a 5-year limited warranty.

ORDERING INFORMATION

Choose the bold face options for the appropriate luminaire configuration for your application and enter on the line above each fixture attribute. Accessories may be factory installed, depending on the particular accessory chosen, but still be ordered as a separate line item.

EXAMPLE:

LWWD 08 40 1L LWG 1 WH 6

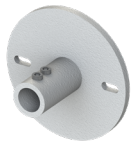
SERIES	LENGTH ¹	COLOR TEMP	NOMINAL LUMENS LM/FT	OPTICS	VOLTAGE	FINISH	MOUNTING 1/2-14 NPS THREADS	OPTIONS
LWWD = LED Wall Wash Luminaire Integrated Driver	02 = 2' 04 = 4' For Custom Length in 2' and 4' increments Example: 08 = 8' (4' + 4') 12 = 12' (4' + 4' + 4') 16 = 16' (4' + 4' + 4' + 4')	30 = Warm White (3000K) 40 = Neutral White (4000K) 50 = Cool White (5000K)	1L = 1,000 Lumens 25L = 2,500 Lumens (Contact Factory for other output options.)	LWG = Linear Wall Grazer	1 = Multi-Volt ²	BZ = Bronze BK = Black AA = Anodized Aluminum WH = White SP = Special ³	STEM LENGTH⁴ 0 = No Stems 6 = 6" Stems 12 = 12" Stems 18 = 18" Stems 24 = 24" Stems GRADE MOUNT GM = Adjustable Arm (See Images Below)	DLP = Dimming Leads Pulled

Accessories: (Order as separate line items)

Wall Mount⁵ - PN#: 102527XX

For Stem Mount Only

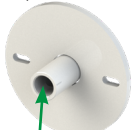
(XX - Paint Finish)



Threaded Wall Mount⁷ - PN#: 102795XX

For GM Adjustable Arm Mount Only

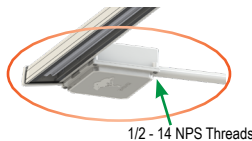
(XX - Paint Finish)



1/2 - 14 NPS Threads

Mounting: (Selected in ordering string)

Stem Mount⁶ - Length selected in order chart.
(Continuous Runs and pack separately for shipping)



1/2 - 14 NPS Threads

Grade Mount - (GM) Adjustable Arm Mount
(Factory installed. Requires 2 per fixture)



1/2 - 14 NPS Threads

NOTES

¹ = Virtually any continuous lengths can be provided in 4' sections. Contact your sales representative for additional info.

² = Multi-Volt is an auto ranging power supply from 100V to 300V input.

³ = Custom RAL color matching is available. Contact your sales representative for additional info.

⁴ = Specify stem length, correct quantity of stems provided for length of run specified.

⁵ = Wall Mount (**PN# 102527XX**) to be used for Stem Mount Only, XX = Paint Finish.

⁶ = Stem Mount (**PN# PTPM(6,12,18 or 24)XX**) if ordering separately, must denote stem length as indicated by numerals & paint finish, XX = Paint Finish.

⁷ = Threaded Wall Mount (**PN# 102795XX**) to be used for GM Adjustable Arm Mount Only, XX = Paint Finish.



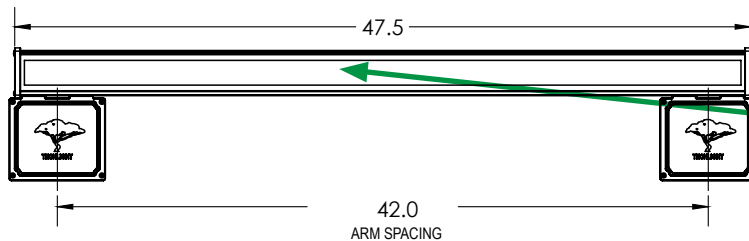
TECHLIGHT
GROUNDED IN ILLUMINATION



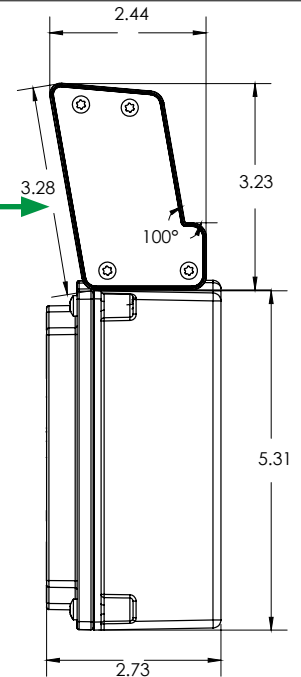
LUMINAIRE WITH INTEGRATED DRIVER DIMENSIONS - INDIVIDUAL

SIDE VIEW

4' MODULE



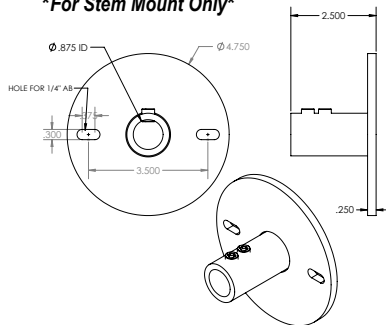
Lens



WALL MOUNT DIMENSIONS

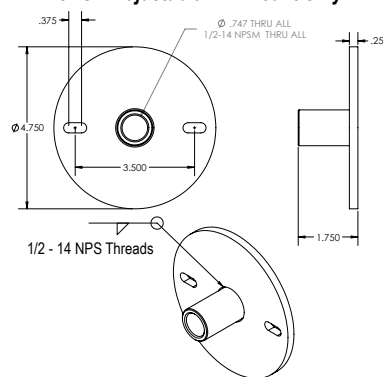
Wall Mount - PN#: 102527XX

For Stem Mount Only



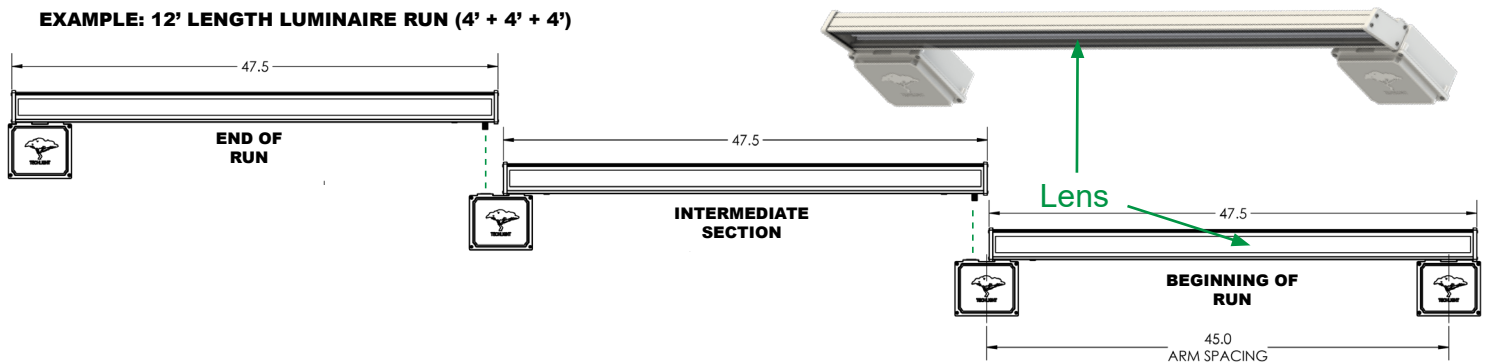
Threaded Wall Mount - PN#: 102795XX

For GM Adjustable Arm Mount Only

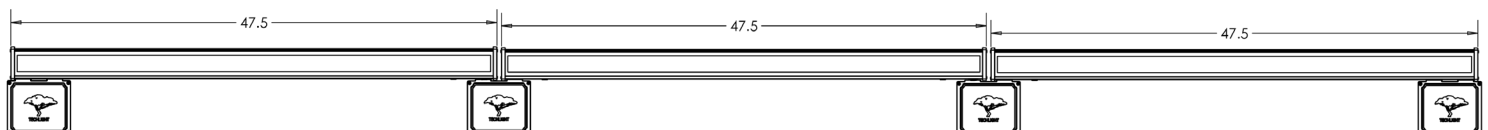


LUMINAIRE WITH INTEGRATED DRIVER DIMENSIONS - CONTINUOUS RUN

EXAMPLE: 12' LENGTH LUMINAIRE RUN (4' + 4' + 4')



A COMPLETED 12' LENGTH LUMINAIRE RUN

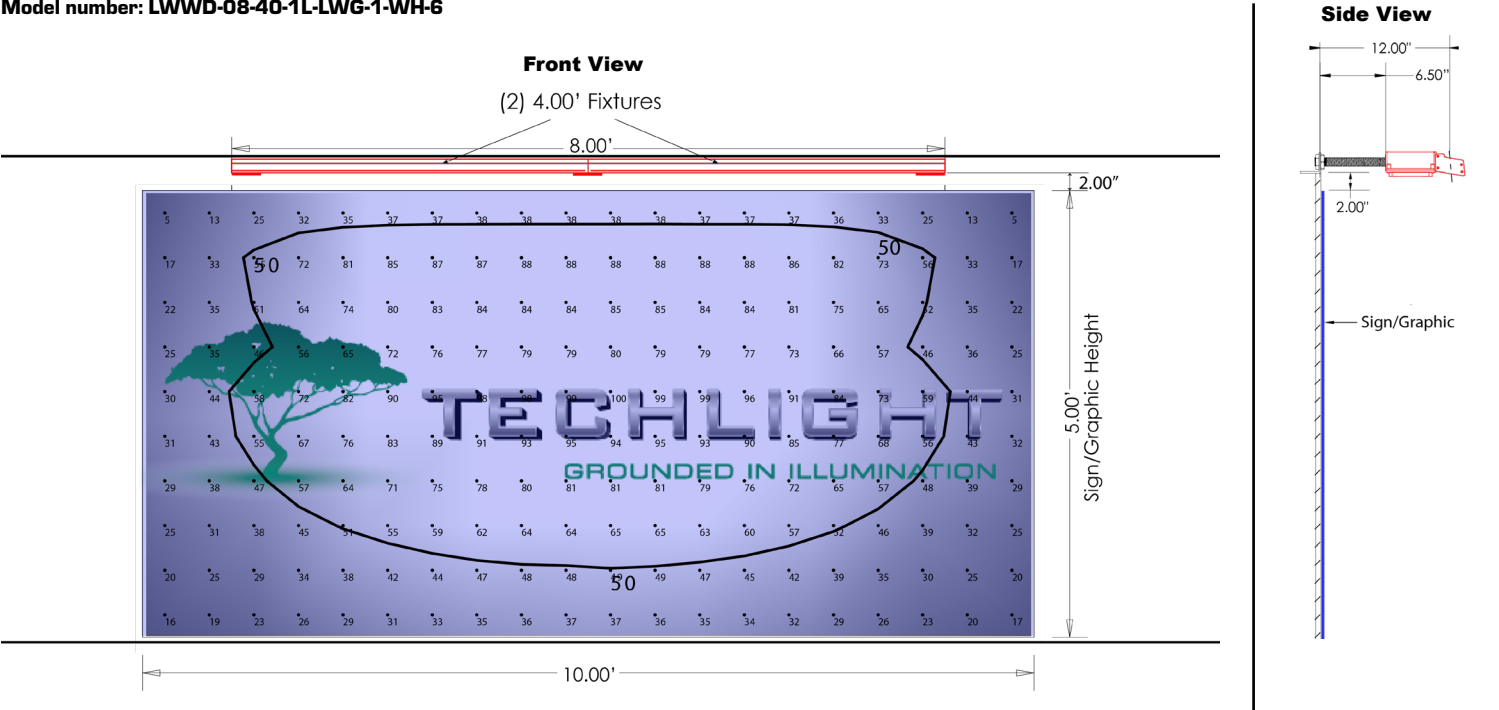


TECHLIGHT
INNOVATION IN ILLUMINATION

LWWD Linear LED Wall Wash - Integrated Driver

ILLUMINANCE PLANE'S CALCULATED MEASUREMENT POINTS (foot-candles)

Model number: LWWD-08-40-1L-LWG-1-WH-6



PHOTOMETRIC CHARACTERISTICS

NOTE: Values shown are for a 4' linear section with a 1L nominal lumen output (1,000 lumens per linear foot).

