



Catalog Number	
Project	Type

FEATURES & SPECIFICATIONS

APPLICATION — The high lumen output luminaire is designed to be a replacement for HID fixtures up to 1500W. It is optimal for lighting applications where long life, low maintenance, and consistent color rendering is required. Areas with limited accessibility due to fixture location or where heavy pedestrian or vehicle traffic makes maintenance difficult are ideal applications. The high wattage/lumen output allows the fixture to be used for parking, restaurant, quick service, shopping centers or sports lighting applications.

CONSTRUCTION — The heavy duty housing is constructed of die cast aluminum with heat dissipating fins. The optical assemblies are sealed in place using a silicone gasket for weather tight protection. Modular LED system for ease of maintenance. ETL listed for wet locations (IP65). Additional IP66 rating available upon request. Fixture can accommodate advanced wireless control, management and reporting systems for outdoor lighting.

FINISH — A corrosion-resistant epoxy coat layer that forms a uniform and all-encompassing protective barrier is applied to the fixtures prior to electrostatically applying a super durable polyester powder coat finish. Standard colors available: Black, Bronze, US Green, White. Custom colors available upon request.

OPTICAL SYSTEM — Made with a state of the art UV stabilized acrylic high performance refractive optical assemblies that use high transmittance materials to achieve precise photometric distributions. Available in Type V Narrow, V Medium, V Wide, Forward Throw, and Narrow Spot beam configurations. The full cutoff fixture is Star Light Friendly (meets or exceeds Dark Sky requirements) in the horizontal position.

ELECTRICAL SYSTEM — Available in up to a 4 module LED system in 5000K-70 CRI Cool White (+/- 500K), 4000K-70 CRI Neutral White, or 3000K-70 CRI Warm White color temperatures. Consult factory for high CRI (90+) model availability. Available with 100-300V 50/60 Hz or 347V~480V. LED's rated for over

LSMA-HO SERIES

Ultra High Lumen Output Scimitar LED Flood Light



Fixture Shown:
LSMA 4 Module

SERIES	HOUSING HEIGHT	LENGTH & WIDTH	EPA (FT ²)
LSMA	7.09"	24.55" x 16.03"	1.3

50,000 hours at 25°C ambient temperature. 0-10V dimming. Built-in surge protection up to 10 kV. Built-in Active PFC Function >95% Full load. LED Power Supply conforms to UL8750 standards.

MOUNTING — Standard mounting option is a (2AF) 2-3/8" ID Adjustable Slip Fitter for mounting on a standard 2-3/8" OD tenon. Additional mounting options, including a (B15) Trunnion Mount are available for custom applications.

LISTINGS — LED Power Supply listed for wet locations (IP65). Meets US and Canadian safety standards. -40°C to 50°C ambient operation. RoHS Compliant. Meets or exceeds DLC requirements.

ORDERING INFORMATION

Choose the bold face options for the appropriate luminaire configuration for your application and enter on the line above each fixture attribute. Accessories may be factory installed, depending on the particular accessory chosen, but still be ordered as a separate line item.

EXAMPLE:

LSMA 4 C 90L T5W 1 BK BTEC

LSMA	MODULE UNIT (SIZE) ⁹	COLOR TEMP	NOMINAL LUMENS ⁹	OPTICS ⁹	VOLTAGE	FINISH	FACTORY INSTALLED OPTIONS
	2 = 2 Mod Unit 4 = 4 Mod Unit	W = Warm White (3000K) N = Neutral White (4000K) C = Cool White (5000K)	23L = 23,000 Lumens 25L = 25,000 Lumens 28L = 28,000 Lumens 30L = 30,000 Lumens 33L = 33,000 Lumens 35L = 35,000 Lumens 38L = 38,000 Lumens 40L = 40,000 Lumens 43L = 43,000 Lumens 45L = 45,000 Lumens 50L = 50,000 Lumens 55L = 55,000 Lumens 60L = 60,000 Lumens 65L = 65,000 Lumens 70L = 70,000 Lumens 75L = 75,000 Lumens 80L = 80,000 Lumens 85L = 85,000 Lumens 90L = 90,000 Lumens	NSP = Narrow Spot T5N = Type V Narrow T5M = Type V Medium T5W = Type V Wide FT = Forward Throw	1 = Multi-Volt ¹ 2 = 347-480V	BZ = Bronze BK = Black GR = US Green WH = White SP = Special ³	IP66 = Additional IP66 Fixture Rating B15⁵ = Trunnion Mount PC2 = 480V Twist-Lock Photocell PC6⁴ = Multi-Tap (105-285V) Twist-Lock Photocell PCR7⁴ = 7-Pin Twist-Lock Photocell Receptacle ANSI C136.41 and Receptacle Shorting Cap BTEC = Integrated Bluetooth Control Module Casambi Ready Mesh Network IMS⁶ = Fixture Mount Passive Infrared Motion Sensor (IMS Lenses Below, Ordered Separately) TLWSFSP-L3⁷ = 360° lens, maximum coverage 40' diameter from 20' height (IMS) TLWSFSP-L7⁷ = 360° lens, maximum coverage 100' diameter from 40' height (IMS)

ACCESSORIES (Order as separate line items)

- SLSMA⁸** Front Light Shield
- S213³** Angled Black Light Shield
- S237⁸** Horizontal Shield
- S238⁸** Vertical Shield
- S240⁸** Three Sided Visor Shield
- S241⁸** Three Sided Full Shield
- S242⁸** Four Sided Shield

NOTES

- ¹ = Multi-Volt is an auto ranging power supply from 100V to 300V input.
- ² = Custom RAL color matching is available. Contact your sales representative for additional info.
- ³ = Order one per LED brick. Field installed.
- ⁴ = Photocell Receptacle must be installed at the factory. No field installation.
- ⁵ = Ordering this option will replace the standard (2AF) 2-3/8" ID Adjustable Slip Fitter.
- ⁶ = TLWSFSP-L3 or L7 Lens must be ordered along with this sensor. (see pg. 4)
- ⁷ = Photo control shield available upon request. Len's must be ordered with IMS option. (see pg. 4)
- ⁸ = Available for 4 module only. Field installed.
- ⁹ = Reference Lumen Chart on Pages 4 & 5 to identify which **Module Unit (size)** to choose depending on the **Nominal Lumens** and **Optic Types** chosen. Some combinations may deviate from ordering logic shown above.



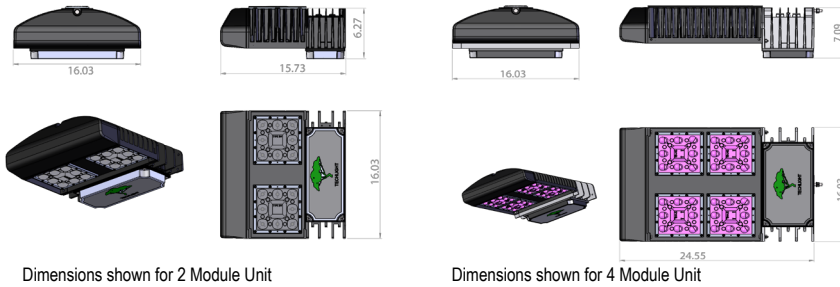
FIXTURE WEIGHTS (APPROX)		
Fixture Configuration	2 Module	4 Module
Weight (lbs)	37 lbs	55 lbs



LSMA-HO Ultra High Lumen Output Scimitar LED Flood Light

AVAILABLE FIXTURE DIMENSIONS

Dimensions shown are for fixture bodies only. Mounting options must be ordered separately.



Dimensions shown for 2 Module Unit

Dimensions shown for 4 Module Unit

EPA RATINGS (ft²)

EPA's shown below include both the fixture and the mounting apparatus.

LSMA 2 (Two Module)

CATALOG NUMBER	DESCRIPTION	0°	20°	30°	45°	60°	70°	90°
TVA4/TVA5	Single Vertical Tenon	0.7	1.0	1.3	1.5	1.7	1.8	2.1
TV2	Two In-Line Tenons	2.2	3.0	3.4	3.9	4.2	4.4	5.1
TV3	Three In-Line Tenons	3.7	4.7	5.4	6.2	6.7	6.9	7.9
TV3120	Three Tenons at 120°	2.9	3.7	4.0	4.4	4.7	4.9	5.3
TV4	Four In-Line Tenons	5.1	6.5	7.4	8.4	9.1	9.4	10.8
TVC4	Four Tenons at 90°	3.7	4.5	5.0	5.5	5.8	6.0	6.7
BH2180	Two In-Line Tenons	1.7	2.5	2.9	3.4	3.7	3.9	4.6
BH3180	Three In-Line Tenons	2.7	3.7	4.4	5.2	5.7	5.9	6.9
BH3120	Three Tenons at 120°	2.5	3.2	3.6	4.0	4.3	4.4	4.8
BH4180	Four In-Line Tenons	3.7	5.2	6.1	7.1	7.7	8.0	9.5
BH490	Four Tenons at 90°	3.1	3.9	4.4	4.9	5.2	5.4	6.1
RV2	Two Tenons In-Line	1.6	2.4	2.9	3.3	3.6	3.8	4.5
RV3	Three Tenons In-Line	2.6	3.7	4.3	5.1	5.6	5.8	5.9
RV3120	Three Tenons at 120°	2.3	3.1	3.4	3.8	4.1	4.3	4.7
RV4	Four Tenons In-Line	3.4	5.0	5.9	6.9	7.6	7.9	9.3
RVC4	Four Tenons at 90°	2.3	3.8	4.2	4.7	5.0	5.2	5.9

LSMA 4 (Four Module)

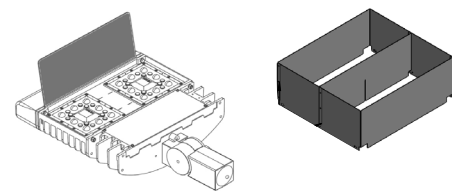
CATALOG NUMBER	DESCRIPTION	0°	20°	30°	45°	60°	70°	90°
TVA4/TVA5	Single Vertical Tenon	1.0	1.3	1.7	2.1	2.4	2.5	3.1
TV2	Two In-Line Tenons	2.8	3.5	4.2	5.1	5.6	5.9	7.1
TV3	Three In-Line Tenons	4.6	5.6	6.6	7.9	8.8	9.2	10.9
TV3120	Three Tenons at 120°	3.4	4.5	5.0	5.8	6.4	6.6	7.3
TV4	Four In-Line Tenons	6.3	7.6	9.0	10.7	11.9	12.4	14.7
BH2180	Two In-Line Tenons	2.3	3.0	3.7	4.6	5.1	5.4	6.6
BH3180	Three In-Line Tenons	3.6	4.6	5.6	6.9	7.8	8.2	9.9
BH3120	Three Tenons at 120°	3.0	4.1	4.5	5.3	5.9	6.2	6.8
BH4180	Four In-Line Tenons	5.0	6.3	7.7	9.4	10.6	11.1	13.4
BH490	Four Tenons at 90°	3.7	5.1	5.8	6.6	7.2	7.5	8.6
RV2	Two Tenons In-Line	2.2	2.9	3.6	4.5	5.0	5.3	6.5
RV3	Three Tenons In-Line	3.5	4.5	5.6	6.8	7.7	8.1	9.8
RV3120	Three Tenons at 120°	2.8	3.9	4.4	5.2	5.8	6.0	6.7
RV4	Four Tenons In-Line	4.8	6.1	7.5	9.2	10.4	10.9	13.2
RVC4	Four Tenons at 90°	3.5	4.9	5.6	6.5	7.0	7.3	8.5

FIXTURE & MOUNTING ACCESSORIES

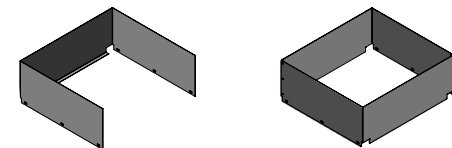
- 2AF (Standard)** 2-3/8" ID Adjustable Slip Fitter
- B15° (Option)** Trunnion Mount
- PC2** 480V Twist-Lock
- PC6⁴** Multi-Tap (105-285V) Twist-Lock Photocell



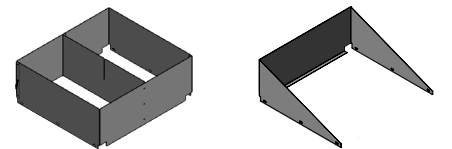
- SLSMA⁸** Front Light Shield
- S237⁸** Horizontal Shield for 4 brick



- S241⁸** 3 Sided Full Shield for 4 brick
- S242⁸** Four Sided Shield for 4 brick



- S238⁸** Vertical Shield for 4 brick
- S240⁸** 3 Sided Angled Shield for 4 brick



LSMA-HO Ultra High Lumen Output Scimitar LED Flood Light

Legend Color Codes Represent the Module Unit Size, per Nominal Lumen/Optic Type in the Chart below.

- 2 Module Unit - Housing Height: 6.27" Length & Width: 15.73 x 16.02
- 4 Module Unit - Housing Height: 7.09" Length & Width: 24.55 x 16.03

COOL & NEUTRAL WHITE (5000K & 4000K)

	NSP	T5M	T5N	T5W
23L	22,481 Lm	23,805 Lm	22,738 Lm	23,687 Lm
	157W 143 Lm/W	147W 162 Lm/W	152W 150 Lm/W	147W 161 Lm/W
	B5-U0-G2	B4-U0-G1	B5-U0-G3	B5-U0-G3
25L	25,066 Lm	25,275 Lm	24,769 Lm	25,149 Lm
	179W 140 Lm/W	157W 161 Lm/W	168W 147 Lm/W	157W 160 Lm/W
	B5-U0-G2	B4-U0-G1	B5-U0-G3	B5-U0-G3
28L	27,611 Lm	27,458 Lm	27,441 Lm	27,322 Lm
	200W 138 Lm/W	173W 159 Lm/W	190W 144 Lm/W	173W 158 Lm/W
	B5-U0-G2	B4-U0-G1	B5-U0-G3	B5-U0-G3
30L	30,116 Lm	30,331 Lm	30,071 Lm	30,180 Lm
	222W 136 Lm/W	195W 156 Lm/W	211W 143 Lm/W	195W 155 Lm/W
	B5-U0-G2	B5-U0-G1	B5-U0-G3	B5-U0-G4
33L	32,581 Lm	32,456 Lm	32,660 Lm	32,294 Lm
	244W 134 Lm/W	211W 154 Lm/W	233W 140 Lm/W	211W 153 Lm/W
	B5-U0-G3	B5-U0-G2	B5-U0-G3	B5-U0-G4
35L	35,007 Lm	35,250 Lm	35,207 Lm	35,075 Lm
	266W 132 Lm/W	233W 151 Lm/W	255W 138 Lm/W	233W 151 Lm/W
	B5-U0-G3	B5-U0-G2	B5-U0-G3	B5-U0-G4
38L	37,983 Lm	37,316 Lm	37,713 Lm	37,810 Lm
	293W 130 Lm/W	249W 150 Lm/W	277W 136 Lm/W	255W 148 Lm/W
	B5-U0-G3	B5-U0-G2	B5-U0-G3	B5-U0-G4
40L	40,319 Lm	40,031 Lm	40,178 Lm	39,833 Lm
	316W 128 Lm/W	271W 148 Lm/W	299W 134 Lm/W	271W 147 Lm/W
	B5-U0-G3	B5-U0-G2	B5-U0-G3	B5-U0-G4
43L	42,348 Lm	42,702 Lm	42,600 Lm	42,490 Lm
	294W 144 Lm/W	293W 146 Lm/W	321W 133 Lm/W	293W 145 Lm/W
	B5-U0-G3	B5-U0-G2	B5-U0-G3	B5-U0-G4
45L	44,962 Lm	45,329 Lm	45,477 Lm	45,104 Lm
	315W 143 Lm/W	316W 143 Lm/W	304W 150 Lm/W	316W 143 Lm/W
	B5-U0-G3	B5-U0-G2	B5-U0-G4	B5-U0-G4
50L	50,132 Lm	50,549 Lm	49,539 Lm	50,298 Lm
	358W 140 Lm/W	315W 161 Lm/W	336W 147 Lm/W	315W 160 Lm/W
	B5-U0-G3	B5-U0-G2	B5-U0-G4	B5-U0-G5
55L	55,222 Lm	54,916 Lm	54,882 Lm	54,644 Lm
	401W 138 Lm/W	347W 158 Lm/W	380W 144 Lm/W	347W 158 Lm/W
	B5-U0-G3	B5-U0-G2	B5-U0-G4	B5-U0-G5
60L	60,232 Lm	60,661 Lm	60,143 Lm	60,360 Lm
	444W 136 Lm/W	390W 156 Lm/W	423W 142 Lm/W	390W 155 Lm/W
	B5-U0-G3	B5-U0-G2	B5-U0-G4	B5-U0-G5
65L	65,163 Lm	64,911 Lm	65,320 Lm	64,589 Lm
	488W 134 Lm/W	423W 154 Lm/W	466W 140 Lm/W	423W 153 Lm/W
	B5-U0-G3	B5-U0-G2	B5-U0-G5	B5-U0-G5
70L	70,014 Lm	70,499 Lm	70,415 Lm	70,149 Lm
	532W 132 Lm/W	466W 151 Lm/W	510W 138 Lm/W	466W 151 Lm/W
	B5-U0-G4	B5-U0-G2	B5-U0-G5	B5-U0-G5
75L	74,785 Lm	74,631 Lm	75,426 Lm	75,620 Lm
	576W 130 Lm/W	499W 150 Lm/W	554W 136 Lm/W	510W 148 Lm/W
	B5-U0-G4	B5-U0-G3	B5-U0-G5	B5-U0-G5
80L	80,637 Lm	80,063 Lm	80,355 Lm	79,665 Lm
	632W 128 Lm/W	543W 147 Lm/W	598W 134 Lm/W	543W 147 Lm/W
	B5-U0-G4	B5-U0-G3	B5-U0-G5	B5-U0-G5
85L	N/A	85,405 Lm	85,201 Lm	84,981 Lm
		587W 146 Lm/W	643W 133 Lm/W	587W 145 Lm/W
		B5-U0-G3	B5-U0-G5	B5-U0-G5
90L	N/A	89,352 Lm		90,207 Lm
		620W 144 Lm/W	N/A	632W 143 Lm/W
		B5-U0-G3		B5-U0-G5

WARM WHITE (3000K)

	NSP	T5M	T5N	T5W
23L	22,540 Lm	22,565 Lm	22,840 Lm	22,453 Lm
	168W 134 Lm/W	147W 154 Lm/W	163W 140 Lm/W	147W 153 Lm/W
	B5-U0-G2	B4-U0-G1	B5-U0-G3	B5-U0-G3
25L	24,971 Lm	25,341 Lm	25,382 Lm	25,215 Lm
	190W 131 Lm/W	168W 151 Lm/W	184W 138 Lm/W	168W 150 Lm/W
	B5-U0-G2	B4-U0-G1	B5-U0-G3	B5-U0-G3
28L	27,957 Lm	27,395 Lm	27,886 Lm	27,935 Lm
	217W 129 Lm/W	184W 149 Lm/W	206W 135 Lm/W	190W 147 Lm/W
	B5-U0-G2	B4-U0-G1	B5-U0-G3	B5-U0-G3
30L	30,304 Lm	30,096 Lm	29,737 Lm	29,947 Lm
	238W 127 Lm/W	206W 146 Lm/W	222W 134 Lm/W	206W 145 Lm/W
	B5-U0-G2	B5-U0-G1	B5-U0-G3	B5-U0-G4
33L	32,612 Lm	32,756 Lm	32,774 Lm	32,593 Lm
	260W 125 Lm/W	227W 144 Lm/W	249W 132 Lm/W	227W 144 Lm/W
	B5-U0-G3	B5-U0-G2	B5-U0-G3	B5-U0-G4
35L	35,445 Lm	34,722 Lm	35,159 Lm	35,197 Lm
	288W 123 Lm/W	244W 142 Lm/W	271W 130 Lm/W	249W 141 Lm/W
	B5-U0-G3	B5-U0-G2	B5-U0-G3	B5-U0-G4
38L	37,669 Lm	37,307 Lm	37,505 Lm	37,758 Lm
	310W 122 Lm/W	266W 140 Lm/W	293W 128 Lm/W	271W 139 Lm/W
	B5-U0-G3	B5-U0-G2	B5-U0-G3	B5-U0-G4
40L	40,142 Lm	39,849 Lm	39,811 Lm	40,277 Lm
	294W 137 Lm/W	288W 138 Lm/W	316W 126 Lm/W	293W 138 Lm/W
	B5-U0-G3	B5-U0-G2	B5-U0-G3	B5-U0-G4
43L	42,621 Lm	42,349 Lm	43,108 Lm	42,754 Lm
	315W 135 Lm/W	310W 137 Lm/W	304W 142 Lm/W	316W 135 Lm/W
	B5-U0-G3	B5-U0-G2	B5-U0-G3	B5-U0-G4
45L	45,080 Lm	45,130 Lm	45,680 Lm	44,906 Lm
	336W 134 Lm/W	294W 154 Lm/W	326W 140 Lm/W	294W 153 Lm/W
	B5-U0-G3	B5-U0-G2	B5-U0-G4	B5-U0-G4
50L	49,943 Lm	50,682 Lm	49,501 Lm	50,430 Lm
	380W 131 Lm/W	336W 151 Lm/W	358W 138 Lm/W	336W 150 Lm/W
	B5-U0-G3	B5-U0-G2	B5-U0-G4	B5-U0-G5
55L	54,730 Lm	54,790 Lm	54,527 Lm	54,518 Lm
	423W 129 Lm/W	369W 149 Lm/W	401W 136 Lm/W	369W 148 Lm/W
	B5-U0-G3	B5-U0-G2	B5-U0-G4	B5-U0-G5
60L	60,608 Lm	60,193 Lm	59,474 Lm	59,894 Lm
	477W 127 Lm/W	412W 146 Lm/W	444W 134 Lm/W	412W 145 Lm/W
	B5-U0-G3	B5-U0-G2	B5-U0-G4	B5-U0-G5
65L	65,225 Lm	65,511 Lm	65,548 Lm	65,186 Lm
	521W 125 Lm/W	455W 144 Lm/W	499W 131 Lm/W	455W 143 Lm/W
	B5-U0-G3	B5-U0-G2	B5-U0-G5	B5-U0-G5
70L	69,767 Lm	69,444 Lm	70,318 Lm	70,393 Lm
	565W 124 Lm/W	488W 142 Lm/W	543W 130 Lm/W	499W 141 Lm/W
	B5-U0-G4	B5-U0-G2	B5-U0-G5	B5-U0-G5
75L	75,338 Lm	74,614 Lm	75,010 Lm	75,516 Lm
	620W 122 Lm/W	532W 140 Lm/W	587W 128 Lm/W	543W 139 Lm/W
	B5-U0-G4	B5-U0-G3	B5-U0-G5	B5-U0-G5
80L	N/A	79,699 Lm	79,623 Lm	80,555 Lm
		576W 138 Lm/W	632W 126 Lm/W	587W 137 Lm/W
		B5-U0-G3	B5-U0-G5	B5-U0-G5
85L	N/A	84,699 Lm	N/A	85,509 Lm
		620W 137 Lm/W		632W 135 Lm/W
		B5-U0-G3		B5-U0-G5
90L	N/A	N/A	N/A	N/A

LSMA-HO Ultra High Lumen Output Scimitar LED Flood Light

FIXTURE MOUNT SENSOR (IMS)

FEATURES & SPECIFICATIONS

APPLICATION — The sensor is ideal for areas such as parking facilities, gas stations, pedestrian pathways, and warehouses. A choice of four lenses ensures complete coverage for mounting heights up to 40'.

OPERATION — Typically, the sensor ramps lighting On to the selected High mode level when motion is detected and the ambient light level is below the hold off setpoint. After the sensor stops detecting movement and the time delay elapses, lights fade to the Low mode level. If there is no motion during the subsequent cut off time delay, the lights will turn Off. For dusk to dawn control, the integral photocell can switch the lights On and Off based on the ambient light level so that lighting remains on overnight even without motion detection.

FEATURES —

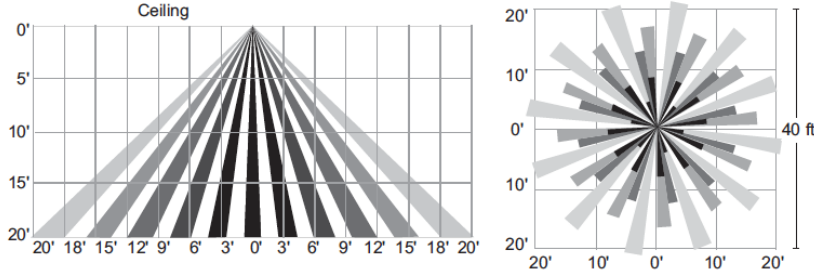
- Provides line voltage On/Off switching
- High and low modes fully adjustable from 0 to 10V
- Time delay from 5 to 30 minutes
- Optional cut off delay
- Adjustable ramp up and fade down times
- Optional daylighting setpoints feature automatic calibration, or permit manual adjustment
- Polycarbonate construction; flame retardant, UV resistant, impact resistant, recyclable
- UL244A and UL508



SENSOR LENSES FIELD OF VIEW

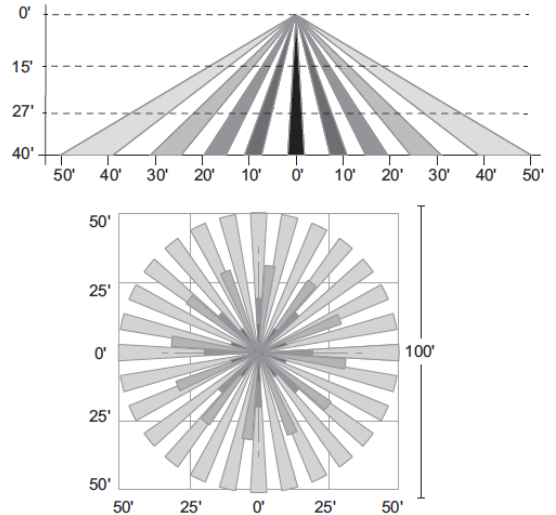
TLWSFSP-L3⁷

360° lens, maximum coverage 40' diameter from 20' height



TLWSFSP-L7⁷

360° lens, maximum coverage 100' diameter from 40' height



⁷ = Black lens cover and Photo control shield available upon request. Len's must be ordered with IMS option.

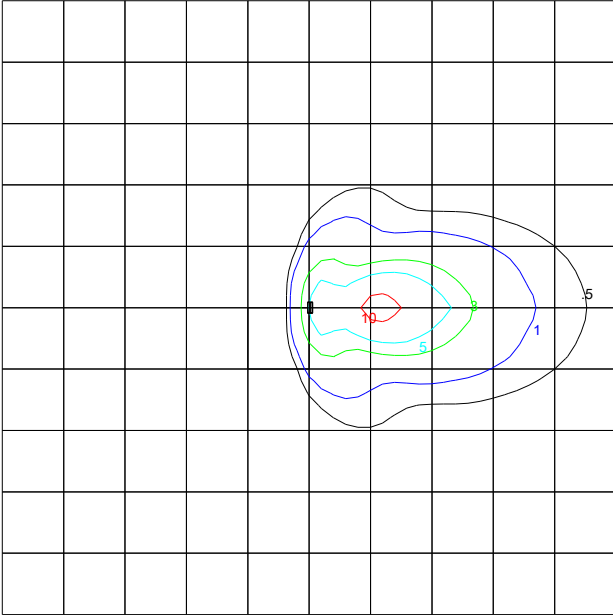
AMPERAGE DRAW CHART

Wattage Range	120V Amps	208V Amps	240V Amps	277V Amps	347V Amps	480V Amps
101-150W	1.3	0.7	0.6	0.5	0.4	0.3
151-200W	1.7	1	0.8	0.7	0.6	0.4
201-250W	2.1	1.2	1	0.9	0.7	0.5
251-300W	2.5	1.4	1.3	1.1	0.9	0.6
301-350W	2.9	1.7	1.5	1.3	1	0.7
351-400W	3.3	1.9	1.7	1.4	1.2	0.8
401-450W	3.8	2.2	1.9	1.6	1.3	0.9
451-500W	4.2	2.4	2.1	1.8	1.4	1
501-550W	4.6	2.6	2.3	2	1.6	1.1
551-600W	5	2.9	2.5	2.2	1.7	1.3
601-650W	5.4	3.1	2.7	2.3	1.9	1.4

PHOTOMETRICS

LSMA 2 C 35L NSP

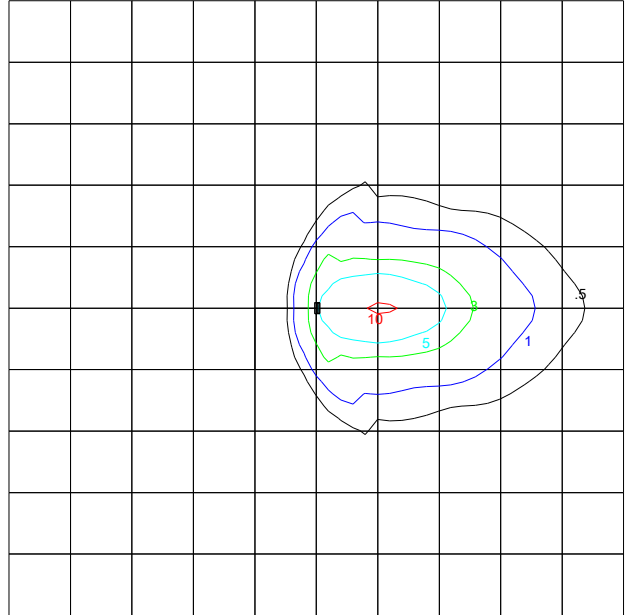
Type Narrow Spot Optical Assembly
2 Module, Cool White, 65 Degree Tilt



LSMA C 35L NSP
25' AFG
65 DEGREE TILT
SCALE = 25'

LSMA 2 C 35L T5N

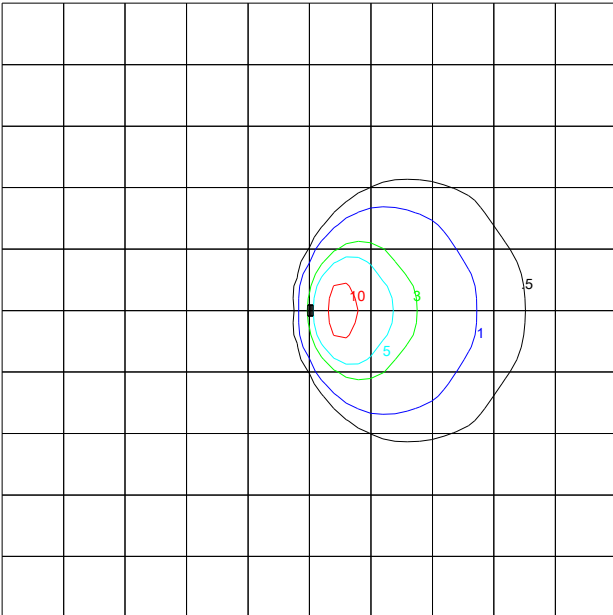
Type V Narrow Optical Assembly
2 Module, Cool White, 65 Degree Tilt



LSMA C 35L T5N
25' AFG
65 DEGREE TILT
SCALE = 25'

LSMA 2 C 35L T5M

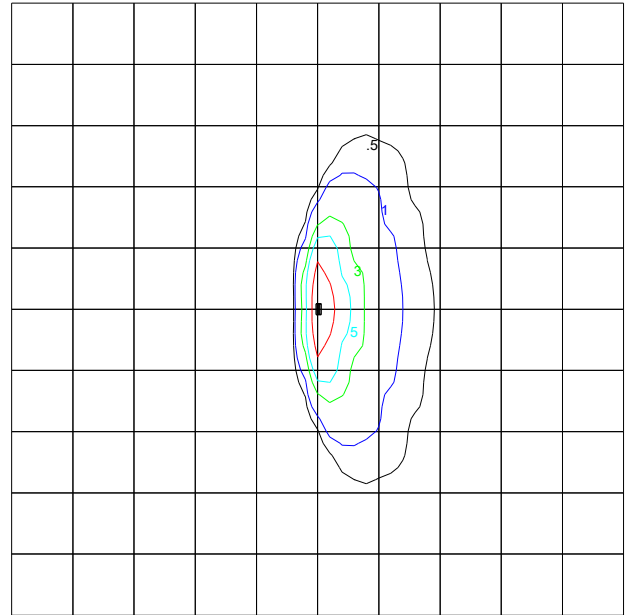
Type V Medium Optical Assembly
2 Module, Cool White, 65 Degree Tilt



LSMA C 35L T5M
25' AFG
65 DEGREE TILT
SCALE = 25'

LSMA 2 C 35L T5W

Type V Wide Optical Assembly
2 Module, Cool White, 65 Degree Tilt



LSMA C 35L T5W
25' AFG
65 DEGREE TILT
SCALE = 25'



TECHLIGHT
INNOVATION IN ILLUMINATION