



Catalog Number

Project

Type

FEATURES & SPECIFICATIONS

APPLICATION — The DCM Medium Die Cast Area Light is designed for general-purpose area lighting. It is the perfect choice for lighting large open areas for safety and security. Wide roadway applications, parking areas, or even wall mount applications for security lighting are all suitable applications for this fixture. The medium size and multiple mounting options make this fixture economical and versatile.

CONSTRUCTION — The housing and door frame are constructed of die cast aluminum. The flat tempered glass lens is sealed in place and a door gasket is provided for weather tight protection. ETL listed for wet locations.

FINISH — A Super Durable Polyester powder coat finish is electrostatically applied in our state of the art paint facility. Standard colors available: Black, Bronze, US Green, White. Custom colors available upon request.

OPTICAL SYSTEM — Made with a state of the art high performance reflectors that use high gloss components to achieve precise photometric distributions. The fixture is a full cut-off light fixture and is Star Light Friendly in the horizontal position only.

ELECTRICAL SYSTEM — Available in 100W thru 400W standard metal halide, pulse-start metal halide, and high pressure sodium. Comes standard with a 4KV pulse rated mogul base socket. Each 60HZ CWA multi-tap or 480V ballast is pre-wired and installed for convenience.

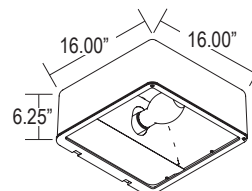
MOUNTING — Standard mounting options include 2", 8" and 10.75" Straight Arms with internal bolt guides for square and round pole mounting on shoe-box models. 2" Adjustable Slip Fitter and Yoke Mount available for floodlight models. Additional mounting options are available.



Medium Die Cast Area Light DCM SERIES



Fixture shown with SSA Straight Arm which is ordered separately.



Series	Housing Height	Length & Width	EPA
DCM	6.25"	16.00" x 16.00"	.95

ORDERING INFORMATION

Choose the bold face options for the appropriate luminaire configuration for your application and enter on the line above each fixture attribute. Accessories may be factory installed, depending on the particular accessory chosen, but still be ordered as a separate line item.

Example: **DCMB1AL1-PS-BZ**

DCMB1					
Series	Reflector	Wattage/Source	Voltage	Pulse-Start	Finish
DCMB1	A Standard Flood D Cutoff Flood H Narrow Parabolic J Medium Parabolic K Type I F Type II L Type III Faceted B Type IV E Type V	K 100W PS Metal Halide V 150W PS Metal Halide D 150W High Pressure Sodium L 175W Metal Halide M 250W Metal Halide E 250W High Pressure Sodium T 320W PS Metal Halide R 350W PS Metal Halide N 400W Metal Halide F 400W High Pressure Sodium	1 Multi-Tap ¹ 2 480V	PS Pulse-Start	BK Black BZ Bronze GR OD Green USG US Green WH White SP Special ²

Accessories (Order as separate line items)

2AF 2" Adjustable Slip Fitter	S104 Medium Wire Guard
B15 Adjustable Yoke Mount	S112 Medium Side Shield
SSA-S³ 2" Straight Arm	S118 Medium 3 Sided Front Mount Visor
SSA-M 8" Straight Arm	PCR Twist-Lock Photocell Receptacle 120V~480V
SSA 10.75" Straight Arm	PC2 480V Twist-Lock Photocell
S71 Medium Louvered Shield	PC6 Multi-Tap (105-285V) Twist-Lock Photocell
S74 Medium 3 Sided Back Side Shield	
S75⁴ Medium 2 Sided Back Side Shield	
S101 Medium Vandal Shield	

NOTES

- 1 Multi-Volt is 120/208/240/277V wired 277V
- 2 Custom RAL color matching is available. Contact your Techlight sales representative for additional information.
- 3 SSA-S Arm cannot be used when pole mounting fixtures at 90° increments.
- 4 S75 shield must be specified as left or right sided shield from the mounting side point of view.

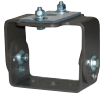
DCM Medium Die Cast Area Light

MOUNTING ACCESSORIES

2AF
2" Adjustable Slip Fitter



B15
Adjustable Yoke Mount



SSA-S, SSA-M, SSA
2", 8" and 10.75" Straight Arms



ADDITIONAL FIXTURE ACCESSORIES

S71
Medium Louvered Shield



S104
Medium Wire Guard



PC2
480V Twist-Lock Photocell
PC6
Multi-Tap (105-285V) Twist-Lock Photocell



S74
Medium 3 Sided Back Side Shield



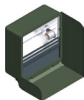
S112
Medium Side Shield



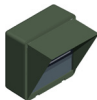
PCR
Twist-Lock Photocell Receptacle 120V-480V



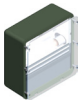
S75¹
Medium Three Sided Back Side Shield



S118
Medium 3 Sided Front Mount Visor



S101
Medium Vandal Shield



NOTES

1 S75 shield must be specified as left or right sided shield from the mounting side point of view.



Techlight, Inc.
2707 Satsuma Drive
Dallas, TX, 75229
Phone: 214-350-0591, 800-225-0727, Fax: 214-350-9137
www.techlight.com