



TECHLIGHT
INNOVATION IN ILLUMINATION

Catalog Number

Project

Type

FEATURES & SPECIFICATIONS

APPLICATION — The high performance luminaire is designed for applications where long life, low maintenance, and consistent color rendering is required. Areas with limited accessibility due to fixture location or where heavy pedestrian or vehicle traffic makes maintenance difficult are ideal applications such as parking lots or walkways. It is also compact and versatile enough for general purpose security lighting. The traditional design style of the luminaire allows it to be seamlessly integrated into existing systems if necessary.

CONSTRUCTION — The heavy duty housing is constructed of extruded aluminum. The optical assemblies are sealed in place using a silicone gasket for weather tight protection. Modular LED bricks wired in parallel for ease of maintenance. ETL listed for wet locations (IP64). Additional IP66 rating available upon request. Stainless steel hardware.

FINISH — A Super Durable Polyester powder coat finish is electrostatically applied in our state of the art paint facility. Standard colors available: Black, Bronze, US Green, White. Custom colors available upon request.

OPTICAL SYSTEM — Made with a state of the art UV stabilized acrylic high performance refractive optical assemblies that use high transmittivity materials to achieve precise photometric distributions. Available in Type II, III, IV, IV Automotive, V Medium and V Wide beam configurations. Star Light Friendly (meets or exceeds Dark Sky requirements) in the horizontal position.

ELECTRICAL SYSTEM — Available in up to a 5 brick LED system in 5000K Cool White (+/- 500K) or 4100K Neutral White color temperatures (70 CRI min.) propagated with Philips Lumileds LUXEON® T LED's. Available with 90-300V 50/60 Hz Class II power supply. LED's rated over 425,000 hours (TM21 Calculated L70) at 25°C ambient temperature with 700mA operation. Lumen Maintenance >97% at 50K hrs. 347V and 480V input options available. Standard 0-10V dimming. Fixture provided with integral 10kV surge

LLSB SERIES

Large Extruded LED Luminaire



SERIES	HOUSING HEIGHT	LENGTH & WIDTH	EPA (FT²)
LLSB	10.41"	26.50" x 22.00"	3.0

protection that meets IEEE C62.42.2-2002. Built-in Active PFC Function. LED Power Supply conforms to UL1310 Class 2 and UL8750 standards and is IP67 rated for wet locations. Drive is compatible with ROAM lighting control system.

MOUNTING — Standard mounting options include 2", 8", and 10.75" straight arms, 2" adjustable slip fitter for tenon mounting, and an adjustable yoke mount. Additional mounting options may be available for custom applications.

LISTINGS — LED Power Supply listed for wet locations (IP67). LED bricks ETL listed for wet locations (IP64). Meets US and Canadian safety standards. -40°C to 50°C ambient operation. RoHS Compliant.

ORDERING INFORMATION

Choose the bold face options for the appropriate luminaire configuration for your application and enter on the line above each fixture attribute. Accessories may be factory installed, depending on the particular accessory chosen, but still be ordered as a separate line item.

EXAMPLE:

**LLSB4C8T5WC1BZ
DIM**

LLSB							
SERIES	# OF BRICKS	COLOR TEMP	# LED'S PER BRICK	OPTICS	DRIVE CURRENT	VOLTAGE	FINISH
	4 = 4 Brick 5 = 5 Brick	C = Cool White (5000K) N = Neutral White (4100K)	8 = 18 LEDs	T2 = Type II T3 = Type III T4 = Type IV T4A = Type IV Auto T5M = Type V Medium T5W = Type V Wide	C = 700 mA	1 = Multi-Volt ¹ 2 = 480V 3 = 347V	BZ = Bronze BK = Black GR = US Green WH = White SP = Special ²

ACCESSORIES

(Order as separate line items)

- SSA-S³** Straight Arm Mount (2")
- SSA-M** Straight Arm Mount (8")
- SSA** Straight Arm Mount (10.75")
- 2AF** 2" Adjustable Slip Fitter
- B15** Adjustable Yoke Mount
- S132⁴** Large 2 Sided Front Side Shield
- S92** Large 3 Sided Front Mount Shield
- S141** Large 4 Sided Shield
- S83** Large Back Side Shield
- S140** Large Vandal Shield
- WMSSA-S** Straight Arm Wall Mount (2")
- WMSSA-M** Straight Arm Wall Mount (8")
- WMSSA** Straight Arm Wall Mount (10.75")

- IP66** Additional IP66 Fixture Rating
- LEDOPTIC-W** Spill Light Elimination
- LEDOPTIC-B** Spill Light Elimination "Black Out"

NOTES

- 1 = Multi-Volt is an auto ranging power supply from 100V to 300V input.
- 2 = Custom RAL color matching is available. Contact your sales representative for additional info.
- 3 = SSA-S Arm cannot be used when pole mounting fixtures at 90° increments.
- 4 = S132 Shield must be specified as a left or right sided shield from the mounting side point of view.
- 5 = Additional IP66 rating may not be changed once production has begun on the fixtures.



www.techlightusa.com

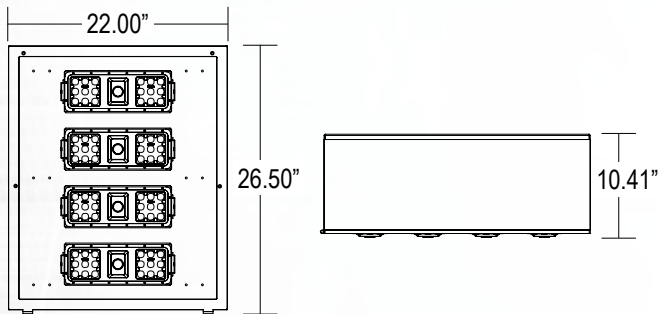
All dimensions and specifications are subject to change without notice.

REV: 20170319-01

LLSB Large Extruded LED Luminaire

AVAILABLE FIXTURE DIMENSIONS

Dimensions shown are for fixture bodies only. Mounting options must be ordered separately.



MOUNTING ACCESSORIES

2AF

2" Adjustable Slip Fitter



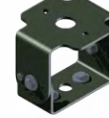
SSA-S¹, SSA-M, SSA

2", 8" and 10.75" Straight Arms



B15

Adjustable Yoke Mount



NOTES

1 = SSA-S Arm cannot be used when pole mounting fixtures at 90° increments.

2 = S132 Shield must be specified as a left or right sided shield from the mounting side point of view.

ADDITIONAL FIXTURE ACCESSORIES

S83

Large Back Side Shield



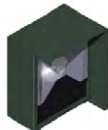
S92

Large 3 Sided Front Mount Shield



S132²

Large 2 Sided Front Side Shield



S141

Large 4 Sided Shield



S140

Large Vandal Shield



LUMINAIRE CHARACTERISTICS

Cool White (5000K) 700 mA Drive Current

# of LED Bricks	# of LEDs per Brick	Color Temp	Delivered Lumens						System Wattage	L70 @ 25°C	Amperage Draw					
			TYPE II	TYPE III	TYPE IV	TYPE 4A	TYPE 5M	TYPE 5W			120V	208V	240V	277V	347V	480V
4 BRICK	18	CW	16222 B3 U0 G2	15974 B3 U0 G2	16162 B3 U0 G2	15967 B3 U0 G2	16054 B4 U0 G2	16260 B4 U0 G2	162	>495K	1.35 A	.78 A	.68 A	.59 A	.47 A	.34 A
5 BRICK	18	CW	20278 B4 U0 G3	19967 B4 U0 G3	20203 B4 U0 G3	19959 B3 U0 G2	20068 B4 U0 G2	20325 B5 U0 G3	203	>495K	1.70 A	.98 A	.85 A	.74 A	.59 A	.43 A

Neutral White (4100K) 700 mA Drive Current

# of LED Bricks	# of LEDs per Brick	Color Temp	Delivered Lumens						System Wattage	L70 @ 25°C	Amperage Draw					
			TYPE II	TYPE III	TYPE IV	TYPE 4A	TYPE 5M	TYPE 5W			120V	208V	240V	277V	347V	480V
4 BRICK	18	CW	15875 B3 U0 G2	15632 B3 U0 G2	15816 B3 U0 G2	15625 B3 U0 G2	15711 B4 U0 G2	15912 B4 U0 G2	162	>495K	1.35 A	.78 A	.68 A	.59 A	.47 A	.34 A
5 BRICK	18	CW	19844 B4 U0 G3	19540 B4 U0 G3	19770 B4 U0 G3	19531 B3 U0 G2	19638 B4 U0 G2	19890 B5 U0 G3	203	>495K	1.70 A	.98 A	.85 A	.74 A	.59 A	.43 A

EPA Ratings (ft²)

Fixture Mounting Angles		
0°	20°	60°
3.0	4.2	6.2

WARNING: Maintenance performed including the replacement of LED bricks while power is still supplied to the luminaire may result in system failures and will void the warranty.



TECHLIGHT
INNOVATION IN ILLUMINATION

2707 SATSUMA | DR. DALLAS, TX 75229 | PH: 800.225.0727 | FX: 214.350.0591 | www.techlightusa.com

All dimensions and specifications are subject to change without notice.

REV: 20170425-01