



Catalog Number	
Project	Type

Features & Specifications

Application

The EU Indirect Wall Luminaire is a classically styled fixture fit for any interior. They are designed to be wall mounted.

Features

The fixture is an indirect light fixture. The fixture is ideal for indirect general illumination with no glare and an aesthetically pleasing housing. Provided with a ribbed acrylic diffuser.

Construction

The housing is constructed of rigid extruded aluminum to provide a light weight load to walls. Fixtures can be individually mounted or installed in a continuous row.

Electrical System

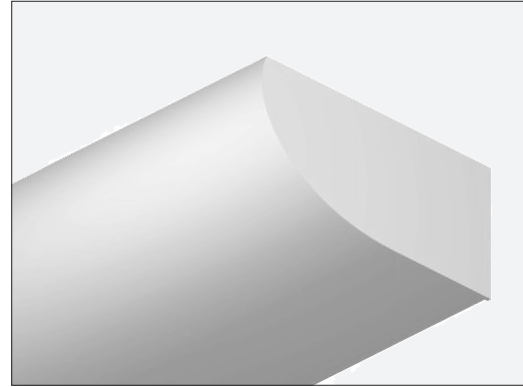
ETL listed. Suitable for damp locations. Damp location emergency pack must be specified separately. Ballasts are solid-state electronic. Ballasts and lamp holders are replaceable without removing from ceiling. Discrete voltage must be specified for emergency pack options when wired with flex.

Finish

All reflective surfaces are finished with a high reflectance, lighting fixture white polyester powder. Special finishes available upon request.

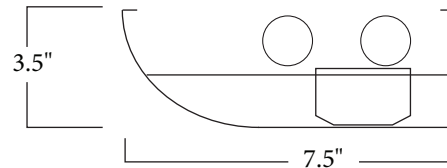
ECLIPSE SERIES

EU INDIRECT WALL LUMINAIRE



*End Caps must be ordered separately.
See Page 2 for ordering information

DIMENSIONS



Please contact your Horizon Sales Representative for more information.

All dimensions subject to change without notice.

Ordering Nomenclature

Ex: (EU Indirect, 2 Lamp, F32T8, White Finish, Lens, Multi-Volt = EU232D)

*End Caps must be ordered separately.
See Page 2 for ordering information

--	--	--	--	--	--	--

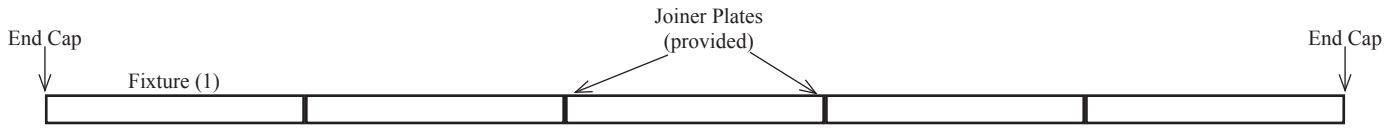
SERIES	NUMBER OF LAMPS PER CROSS SECTION	WATTAGE/TYPE	FIXTURE COLOR	VOLTAGE	BALLAST FACTOR	OPTIONS
EU	2 (Tandem fixture bodies will have two cross sections per fixture doubling the length and number of lamps per fixture)	14 - 14W T5, 22" 17 - 17W T8, 24" 24 - 24W T5ho, 22" 28T5 - 28W T5, 46" 28T8 - 28W T8, 48" 32 - 32W T8, 48" 48HO - 60W 800mA, 48" 54 - 54W T5HO, 46"	BLANK - White T - Titanium B - Black SP - Special	D - Multi-Volt 1 - 120V 2 - 277V 3 - 347V 4 - 480V *Multi-Volt is 120/277V	BLANK - Normal H - High L - Low	10RS - ≤10% THD, Rapid Start P - Program Start 20 - ≤20% THD EB5 - 500 Lumen Emergency Ballast EB7 - 700 Lumen Emergency Ballast EB14 - 1400 Lumen Emergency Ballast EB30 - 3000 Lumen Emergency Ballast FBF - Fast-Blow Fuse SBF - Slow-Blow Fuse AC63 - 6', 3/8" dia., Armored Flex Cable SJ6 - 6', 3/8" dia., 16/3 SJ Cord SJ10 - 10', 3/8" dia., 16/3 SJ Cord SJ15 - 15', 3/8" dia., 16/3 SJ Cord PWO - Palletized without Cartons CD - Continuous Dimming (T8) SD - Step Dimming (T8) WOC - 120/347 Volt Sensor WOC1 - 480 Volt Sensor C1 - 6' Cord w/120V Nema Plug 16/3 15A C2 - 6' Cord w/277V Nema Plug 16/3 15A C3 - 10' Cord w/277V Nema Plug 16/3 20A C4 - 6' Cord w/480V Nema Plug 16/3 20A

ADDITIONAL OPTIONS

- WH34- Wiring Harness 3-Wire 4-Foot
- WH44- Wiring Harness 4-Wire 4-Foot
- WH54- Wiring Harness 5-Wire 4-Foot
- WH38- Wiring Harness 3-Wire 8-Foot
- WH48- Wiring Harness 4-Wire 8-Foot
- WH58- Wiring Harness 5-Wire 8-Foot

*See Second Page for End Cap Information

Energy Saving Tip!
Our Occupancy Sensor option instantly turns lights on and off



End Caps

The Eclipse EU fixture was designed to be mounted as either a stand-alone fixture, or mounted end-to-end for continuous linear rows. The mounting configuration will determine the number of end caps needed to complete an installation.

End Caps should be ordered 2 per fixture for stand-alone fixtures or 2 per row for continuous linear rows (# of fixtures x 2, or # of rows x 2).

Part Number	Description
EUEC	EU Series End Cap (qty one)

Typical Row Configurations

	Row Length	2'	4'	6'	8'	10'	12'	14'	16'	18'	20'	22'	24'	26'	28'	30'	32'	34'	36'	38'	40'	42'	44'	46'	48'
Fixture Length	2'	1		1		1		1		1		1		1		1		1		1		1		1	
	4'		1	1			1	1			1	1			1	1			1	1			1	1	
	8'				1	1	1	1	2	2	2	2	3	3	3	3	4	4	4	4	5	5	5	5	6
End Caps		2	2	2	2	2	2	2	2	2	2	2	2	2	2	2	2	2	2	2	2	2	2	2	2